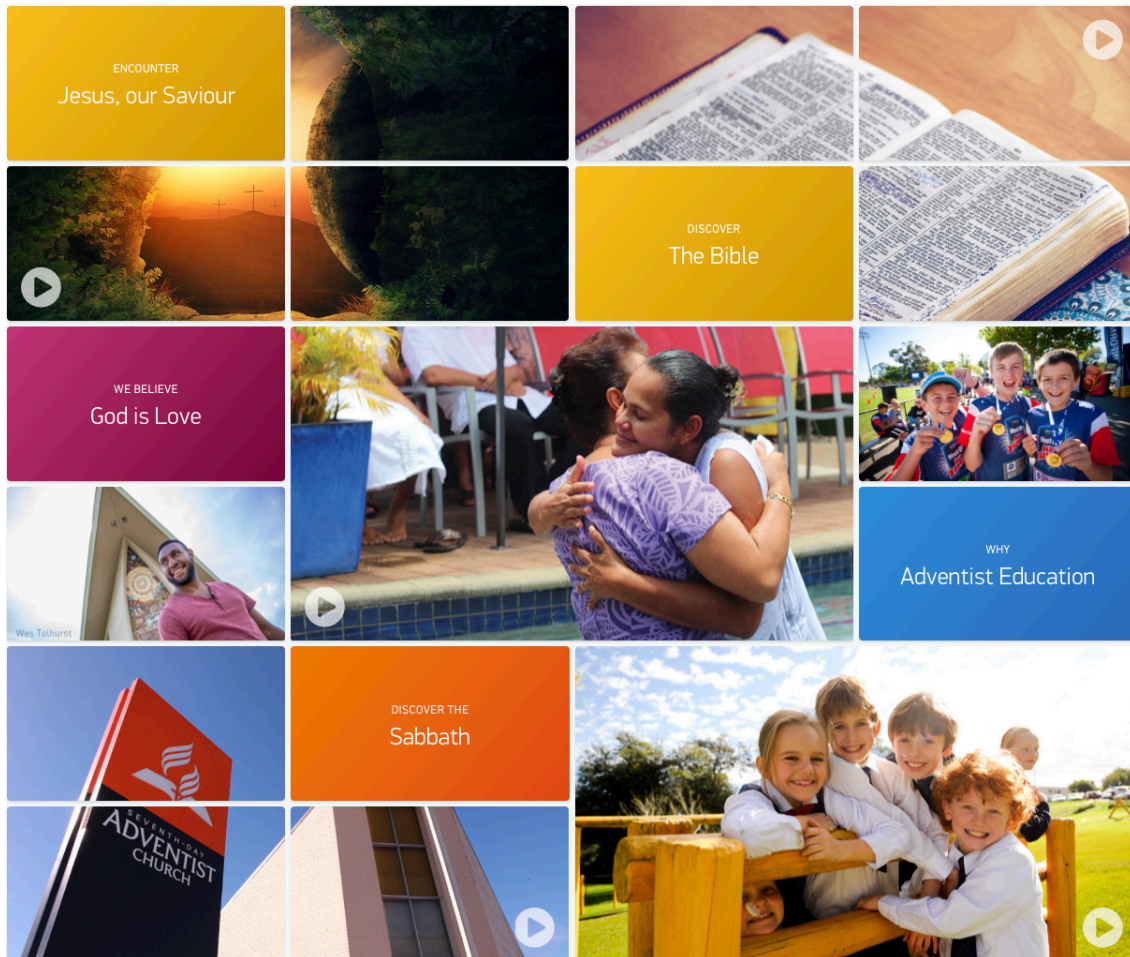


2017-2018 Seventh-day Adventist

GLOBAL CHURCH MEMBER SURVEY

South Pacific Division of the Seventh-day Adventist Church



Descriptive Analysis Report
prepared by

Peter Beamish PhD
Faculty of Education, Business and Science
Avondale College of Higher Education

Table of Contents

Background to the Study.....	4
The South Pacific Division of Seventh-day Adventists.....	4
The Study	4
THE RESULTS OF THE DESCRIPTIVE ANALYSIS	8
AN OVERVIEW OF THE SAMPLE	8
SECTION 1: PERSONAL DEMOGRAPHICS.....	10
1. Gender	10
1. Age.....	10
2. Disability Demographics	11
3. SDA Employment.....	12
4. Education Level	12
5. SCHOOLING TYPES.....	13
6. Adventist Education.....	13
7. Years Attending an Adventist School.....	14
SECTION 2: DEMOGRAPHICS (HOUSEHOLD/RELIGIOUS IDENTITY).....	15
8. Household Size	15
9. Sabbath Observance	15
10. Marital Status.....	16
11. Children at Home	16
12. LIVING CHILDREN.....	17
13. SDA CHILDREN.....	17
14. Identify as an SDA.....	18
15. Are You a Baptised SDA?	18
16. Personal History	19
17. Family History	20
18. Church Office	20
19. Church Attendance.....	21
20. Church Membership.....	21
21. Family Religious Routines	22
22. Family Situation.....	23
23. Parenting Style	24
SECTION 3: RELIGIOUS BEHAVIOR/ROLES.....	25
24. Social Religious Activities.....	25
25. Personal & Family Religious Activities.....	27
26. Program Awareness	30

SECTION 4: RELIGIOUS ATTITUDES AND EXPERIENCES	32
27. Church Experiences	32
28. Spirit of Prophecy Accessibility	34
29. Sermon Topics.....	35
30. Commitment to Christ.....	35
31. Involvement	36
32. Nurture Scale	37
33. Satisfaction.....	38
34. Lifelong Commitment.....	39
35. Commitment to Others Scale.....	39
36. Sabbath-Keeping Internalization.....	41
SECTION 5: WELL-BEING	43
37. Happiness.....	43
38. Well-Being.....	43
39. Spiritual Well-Being.....	44
SECTION 6: BELIEFS.....	46
40. Fundamental Beliefs.....	46
41. Authority—Bible.....	49
42. Authority—Spirit of Prophecy.....	50
43. Belief Acceptance	50
SECTION 7: HEALTH	53
44. Diet	53
45. Alcohol Use	54
46. Tobacco Use	54
47. Alcohol Research Belief	55
48. Commitment to Health.....	55
49. Health Message Beliefs.....	56

Background to the Study

The Church Member Survey was used to collect data throughout the South Pacific Division in 2017 - 2018. This document is the first written report coming out of this research and provides a descriptive analysis of the data regarding faith, values, and commitment of a selective sample of Adventist church members throughout the South Pacific Division. The research was sponsored by the General Conference of Seventh-day Adventists.

The South Pacific Division of Seventh-day Adventists

The South Pacific Division of Seventh-day Adventists is made up of more than 20 nations and territories with a total land area of 8.5 million square kilometres, scattered across 40 million square kilometres of ocean. Countries include Australia, Papua New Guinea, New Zealand, Solomon Islands, New Caledonia, Fiji, Vanuatu, French Polynesia, Samoa, Kiribati, Tonga, Wallis and Futuna, Niue, Cook Islands, American Samoa, Tuvalu, Nauru, Tokelau, and Pitcairn. Populated island territories include Christmas Island, Norfolk Island, Cocos, and Coral Sea Islands.

The Seventh-day Adventist Church in the South Pacific has divided its territory into four unions: The Trans-Australia Union, the Papua New Guinea Union Mission, the Trans-Pacific Union Mission, and the New Zealand Pacific Union.

The Trans-Australia Union covers the nation of Australia and includes a number of small island territories, divided into nine conferences: North Australia, South Queensland, North New South Wales, Greater Sydney, South New South Wales, Victoria, Tasmania, South Australia, and Western Australia.

The Papua New Guinea Union Mission, that includes the mainland territory of that nation plus the many islands within its international boundaries is divided into nine missions and a conference: Bougainville, Central Papua Conference, Eastern Highlands and Simbu, Morobe, Madang-Manus, New Britain–New Ireland, North East Papua, South-West Papua, Sepik Mission, and Western Highlands.

The Trans-Pacific Union Mission is made up of eleven nations divided into six separate missions and an attached church. They are the missions of Fiji, Kiribati-Nauru, Niue Attached Church, Samoa-Tokelau, Solomon Islands, Tonga, Tuvalu, and Vanuatu.

Finally, the New Zealand Pacific Union comprises New Zealand, Cook Islands, Pitcairn Island, and the French territories of French Polynesia New Caledonia, Wallis and Futuna.

The Study

The 2017 Church Member Survey was used to measure the progress of church members in three aspects reflected in the *Reach the World* 2015-2020 Strategic Plan. The Survey Instrument was developed by the GC Office of Archives, Statistics, and Research and distributed to each Division. Upon receiving the instrument, there was a process of working with the GC team to ensure the survey reflected the cultural and linguistic particularities of the South Pacific Division. The survey

instrument was approved by the South Pacific Division Executive committee and only one or two new questions were added as it was felt that the survey was already very long. The survey was divided into seven sections. The sections, and variables included within these sections, are listed below:

SECTION 1: PERSONAL DEMOGRAPHICS

- ITEM 1: GENDER
- ITEM 2: AGE (YEAR)
- ITEM 3: DISABILITY DEMOGRAPHICS
- ITEM 4: SDA EMPLOYMENT
- ITEM 5: SCHOOLING LEVEL
- ITEM 6: SCHOOLING TYPES
- ITEM 7: SDA EDUCATION (YEARS)

SECTION 2: DEMOGRAPHICS (HOUSEHOLD/RELIGIOUS IDENTITY)

- ITEM 8: HOUSEHOLD SIZE
- ITEM 9: HOUSEHOLD SABBATH OBSERVANCE
- ITEM 10: MARITAL STATUS
- ITEM 11: CHILDREN
- ITEM 12: LIVING CHILDREN
- ITEM 13: SDA CHILDREN
- ITEM 14: IDENTIFY SDA
- ITEM 15: BAPTIZED SDA
- ITEM 16: PERSONAL HISTORY
- ITEM 17: FAMILY HISTORY
- ITEM 18: CHURCH OFFICE
- ITEM 19: CHURCH ATTENDANCE
- ITEM 20: CHURCH MEMBERSHIP
- ITEM 21: FAMILY RELIGIOUS ROUTINES
- ITEM 22: FAMILY SITUATION
- ITEM 23: PARENTING STYLE

SECTION 3: RELIGIOUS BEHAVIOR/ROLES

- ITEM 24: SOCIAL RELIGIOUS ACTIVITIES
- ITEM 25: PERSONAL & FAMILY RELIGIOUS ACTIVITIES
- ITEM 26: PROGRAM AWARENESS

SECTION 4: RELIGIOUS ATTITUDES AND EXPERIENCES

- ITEM 27: CHURCH EXPERIENCES
- ITEM 28: SPIRIT OF PROPHECY ACCESSIBILITY
- ITEM 29: SERMON TOPICS
- ITEM 30: COMMITMENT TO CHRIST
- ITEM 31: INVOLVEMENT
- ITEM 32: NURTURE SCALE
- ITEM 33: SATISFACTION
- ITEM 34: LIFELONG COMMITMENT
- ITEM 35: COMMITMENT TO OTHERS SCALE
- ITEM 36: SABBATH-KEEPING INTERNALIZATION

SECTION 5: WELL-BEING

- ITEM 37: HAPPINESS
- ITEM 38: WELL-BEING
- ITEM 39: SPIRITUAL WELL-BEING

SECTION 6: BELIEFS

- ITEM 40: FUNDAMENTAL BELIEFS
- ITEM 41: AUTHORITY—BIBLE
- ITEM 42: AUTHORITY—SPIRIT OF PROPHECY
- ITEM 43: BELIEF ACCEPTANCE

SECTION 7: HEALTH

- ITEM 44: DIET
- ITEM 45: ALCOHOL USE
- ITEM 46: TOBACCO USE
- ITEM 47: ALCOHOL RESEARCH BELIEF
- ITEM 48: COMMITMENT TO HEALTH
- ITEM 49: HEALTH MESSAGE BELIEFS

The instrument was translated into several different languages for the study. The South Pacific Division of the Seventh-day Adventist church is comprised of thirteen nations and hundreds of languages and cultures. Australia has multiple cultures as does New Zealand while the South Pacific Islands fall into roughly three dominant cultures, Melanesian, Polynesian and Micronesian. Although English is widely spoken throughout the South Pacific, Pidgin English is used throughout much of Melanesia, and the Polynesian islands have their own local languages although English and French are widely understood.

After doing an analysis of the countries to be surveyed, and the languages that they speak, it was decided to use an English version, a simple English version, and a French version of the survey to collect the data. A paper-based version of the 2017 World Church Member Survey was used to collect data in the South Pacific Division. Surveys were mostly printed in the local mission or conference, or suitable local printshop.

Avondale College of Higher Education requires that all research be approved by the Research and Ethics Committee. This approval was gained and all participants were given details of the study via an information sheet that formed the front page of the survey. Participants were informed that their participation is voluntary and they were free to withdraw at any time.

A stratified geographic sampling technique was used to select respondents. There are large numbers of urban dwellers in Australia and New Zealand and in some places of Papua New Guinea but for the most part rural life is the norm throughout the island nations. Data was collected from both urban and rural settings to ensure appropriate representation in the sample of SDA church members of both genders, and representatives of major ethnic and age groups in the South Pacific Division.

The data was collected by a number of people who were on the research team. The team included:
Principal investigators: Dr Peter Beamish and Dr David Tasker
Team Members: Dr Kayle de Waal, Dr Kevin Petrie, Dr Lindsay Morton, Associate Professor Rob McIver, Professor Anthony Williams.

In most cases a member of the research team took the surveys to a church or meeting and worked with the local pastors to coordinate the completion of the survey by church members. Completed

surveys were then collected and most data entry from surveys was done locally, using portable scanners. Once scanned, data was entered into SPSS by using Remark software, and then analysed. The analysis for this initial report has been undertaken by Dr Peter Beamish and is descriptive in nature. It is planned that report that looks at comparative analysis will be undertaken in the weeks to come.

THE RESULTS OF THE DESCRIPTIVE ANALYSIS

AN OVERVIEW OF THE SAMPLE

The South Pacific Division is made up of four Unions. These include the Australian Union Conference, the New Zealand and Pacific Union Conference, the Papua New Guinea Union Conference, and the Transpacific Union Conference. The sample was designed to reflect the Seventh-day Adventist population in each of these unions within the South Pacific Division.

Table 1 Sample Composition by Union

	Frequency	Percent	Valid Percent	Cumulative Percent
AUC	611	18.5	18.5	18.5
NZPUC	293	8.9	8.9	27.4
PNGUM	1467	44.4	44.4	71.8
TPUM	933	28.2	28.2	100.0
Total	3304	100.0	100.0	

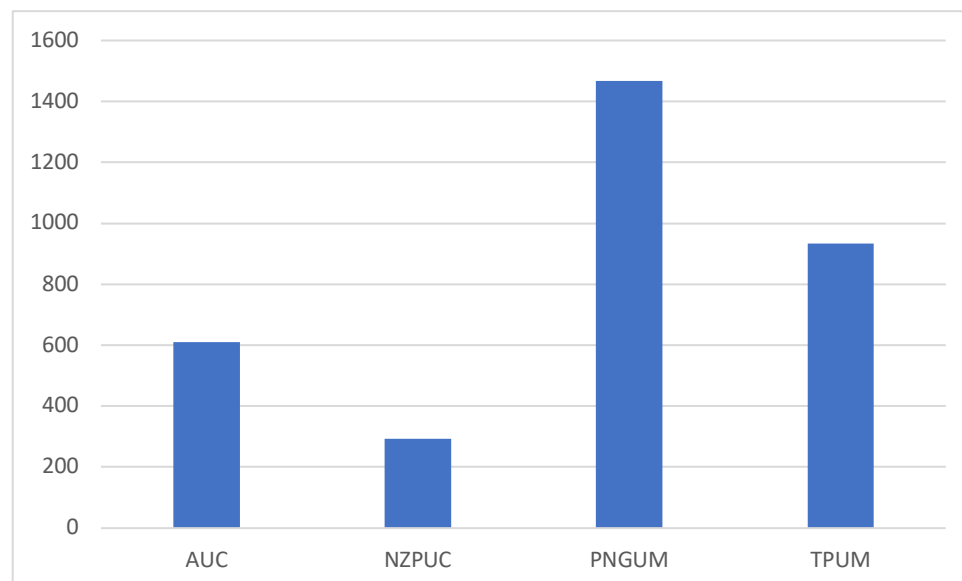


Figure 1 Sample Composition by Union

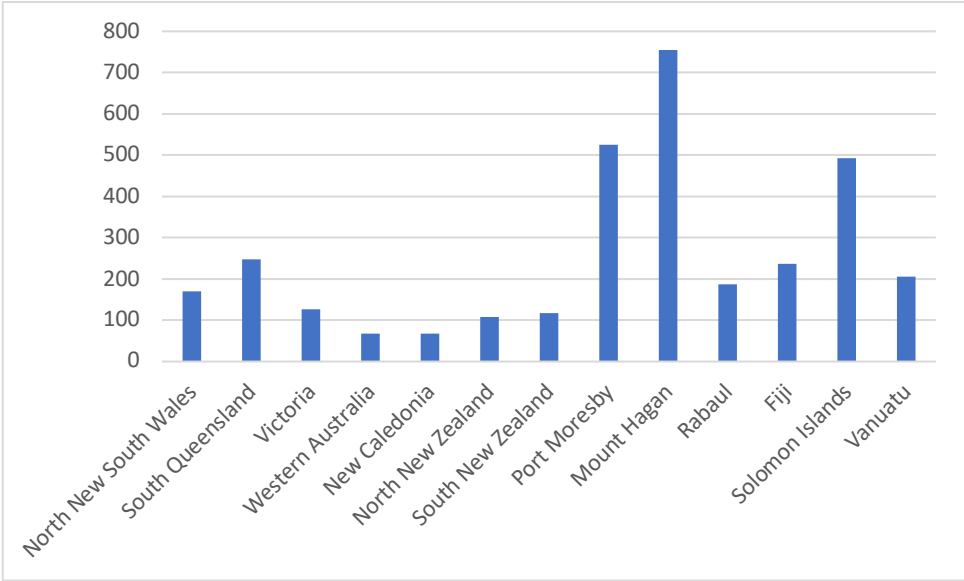


Figure 2 Data Source by Region

SECTION 1: PERSONAL DEMOGRAPHICS

1. Gender

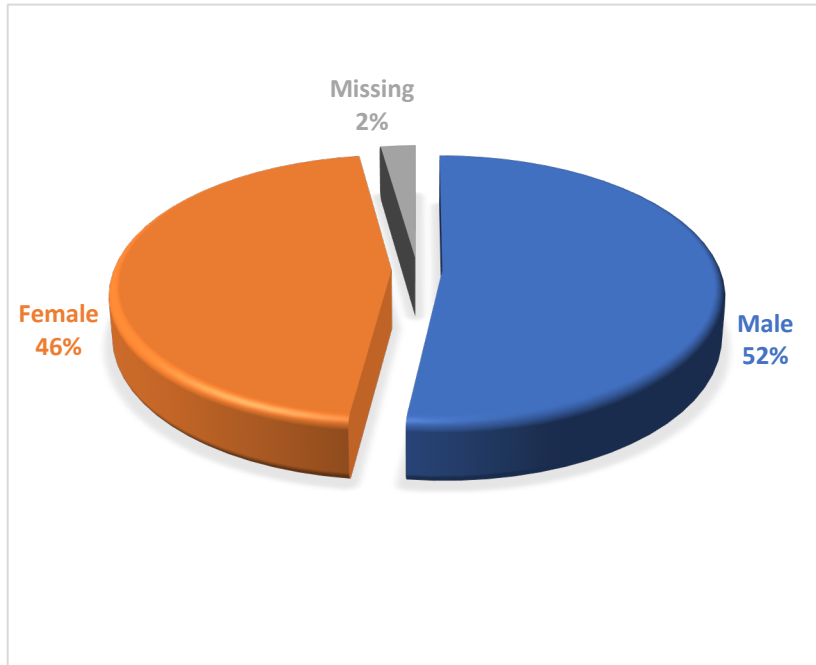


Figure 3 Gender

1. Age

As requested the age of participants have been clustered using 5-year clusters.

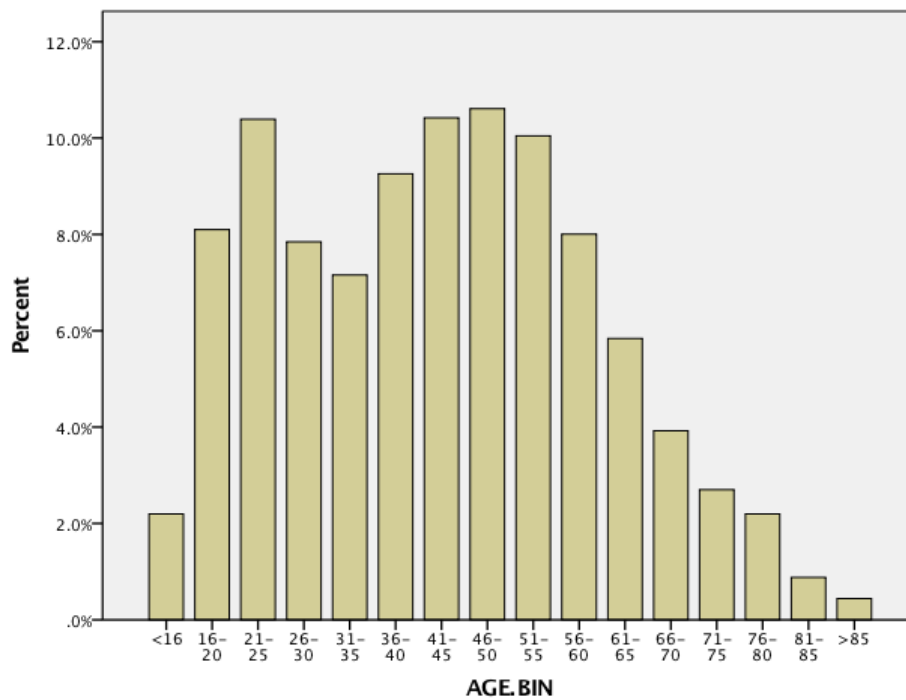


Figure 4 Age of Participants

2. Disability Demographics

Members were asked to indicate if they had a disability.

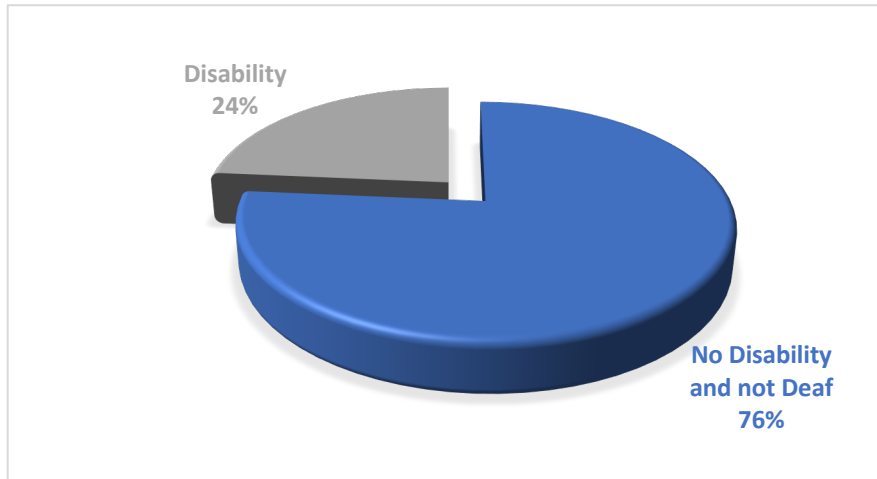


Figure 5 Disability

The following table shows the distribution of those who indicated that they had a disability.

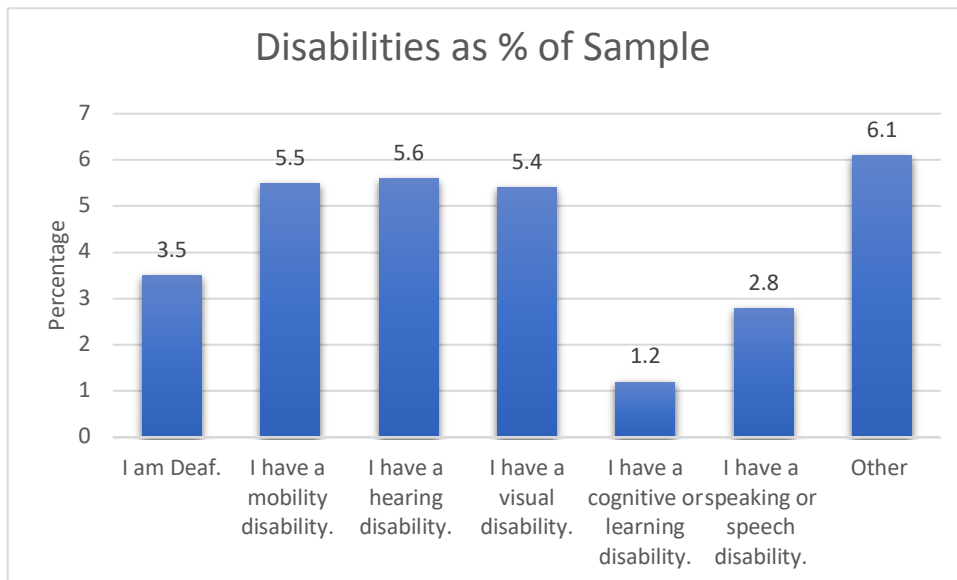


Figure 6 Disability Type

3. SDA Employment

Participants indicated if they are employed, had been employed, or never employed by the SDA church.

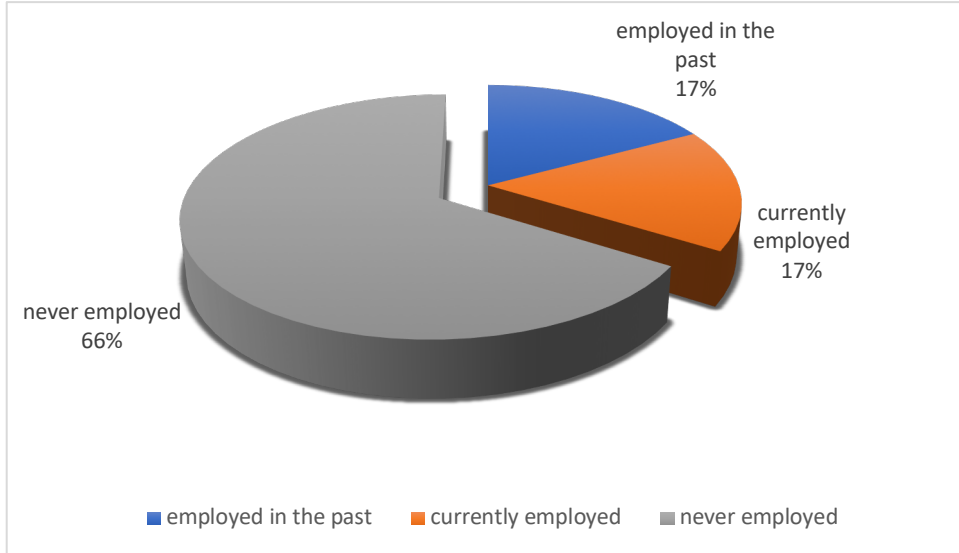


Figure 7 Church Employ

4. Education Level

Participants indicated the highest level of school that they had completed (Item 5).

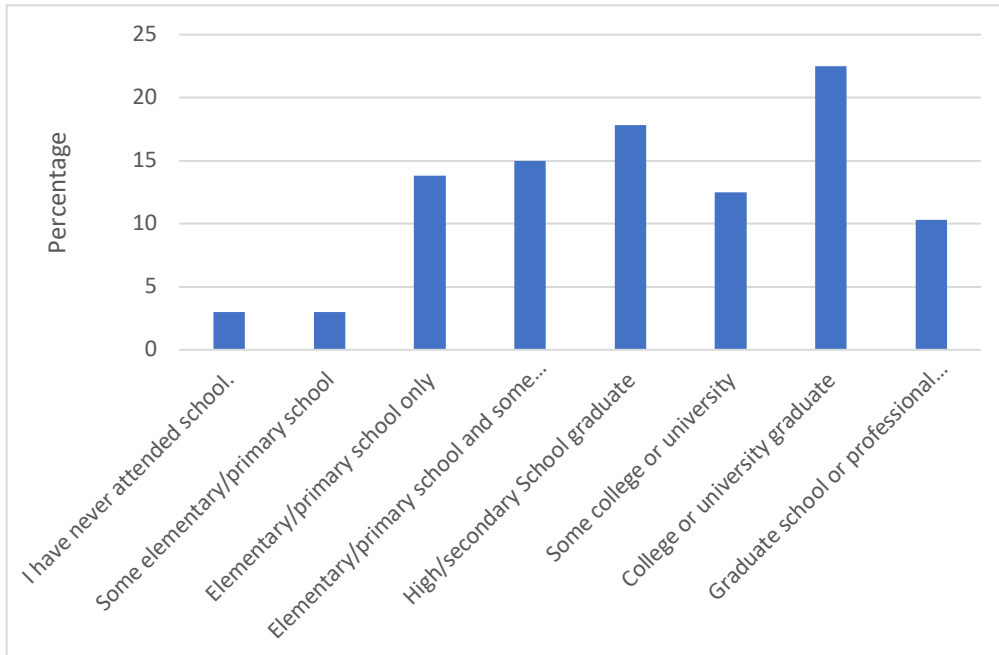


Figure 8 Education Level

5. SCHOOLING TYPES

Participants then indicated where they went to school, whether they attended an Adventist School (Item 6) and the number of years they spent in an Adventist School (Item 7).

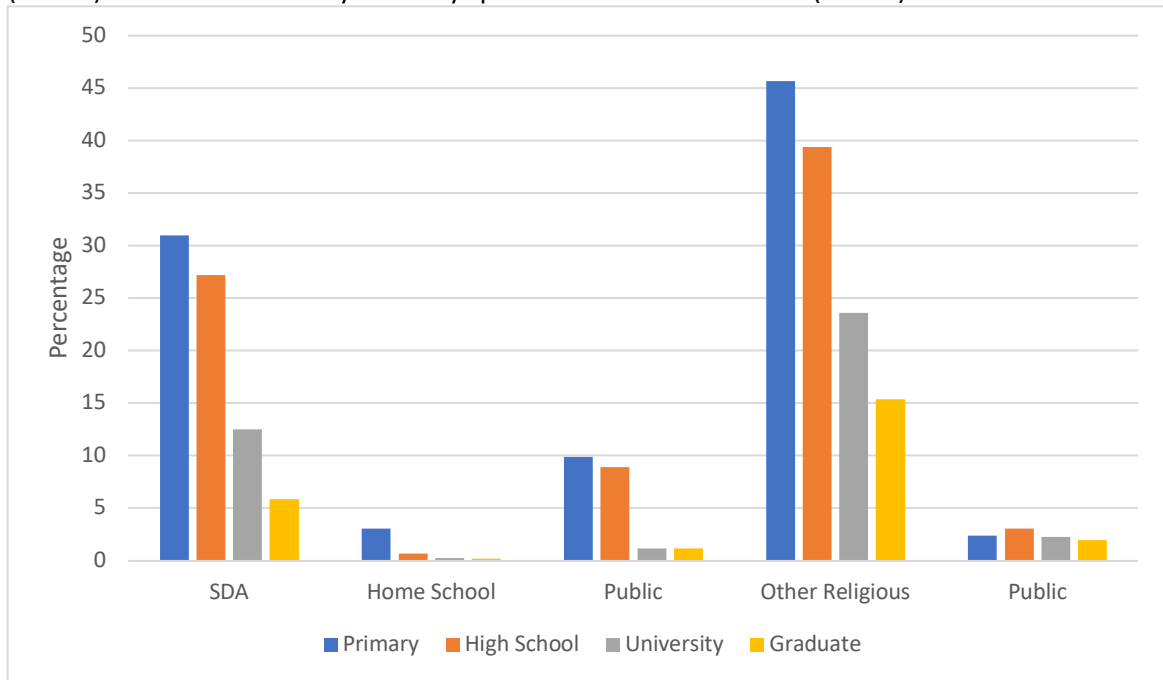


Figure 9 School Types

6. Adventist Education

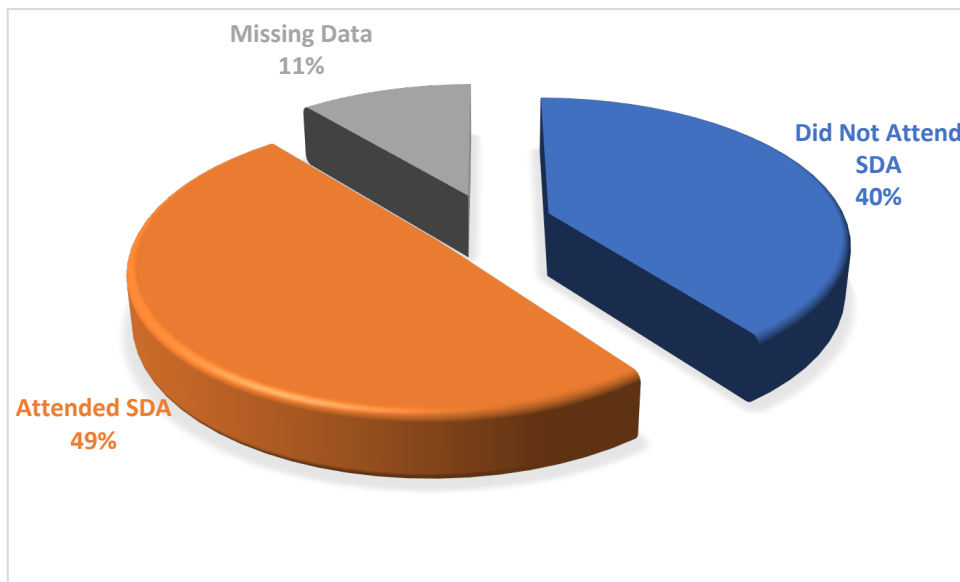


Figure 10 Attended an Adventist School

7. Years Attending an Adventist School

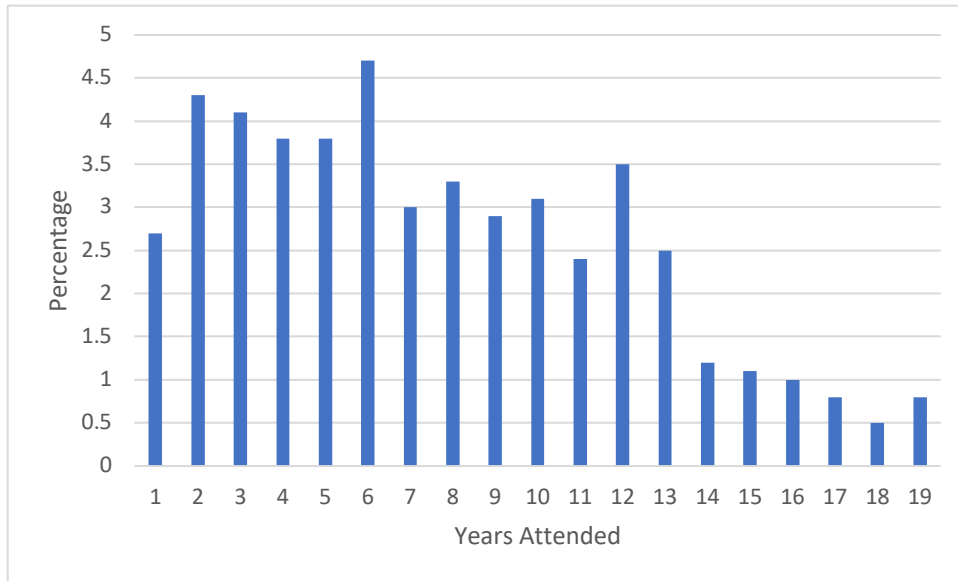


Figure 11 Years Attending an SDA School

SECTION 2: DEMOGRAPHICS (HOUSEHOLD/RELIGIOUS IDENTITY)

8. Household Size

Participants indicated how many people lived in their immediate household (Item 8) and how many people in their immediate household observed the Sabbath (Item9).

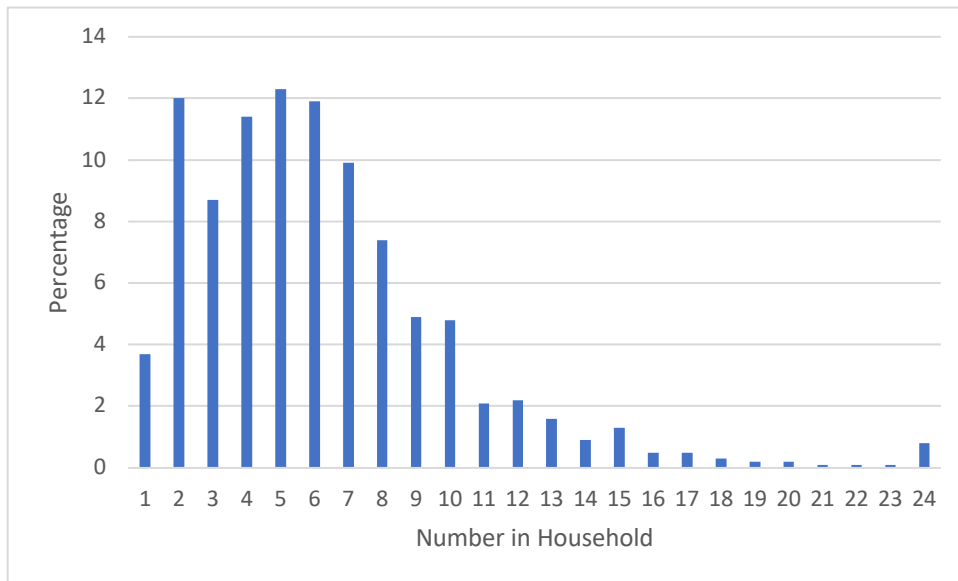


Figure 12 Household Size

9. Sabbath Observance

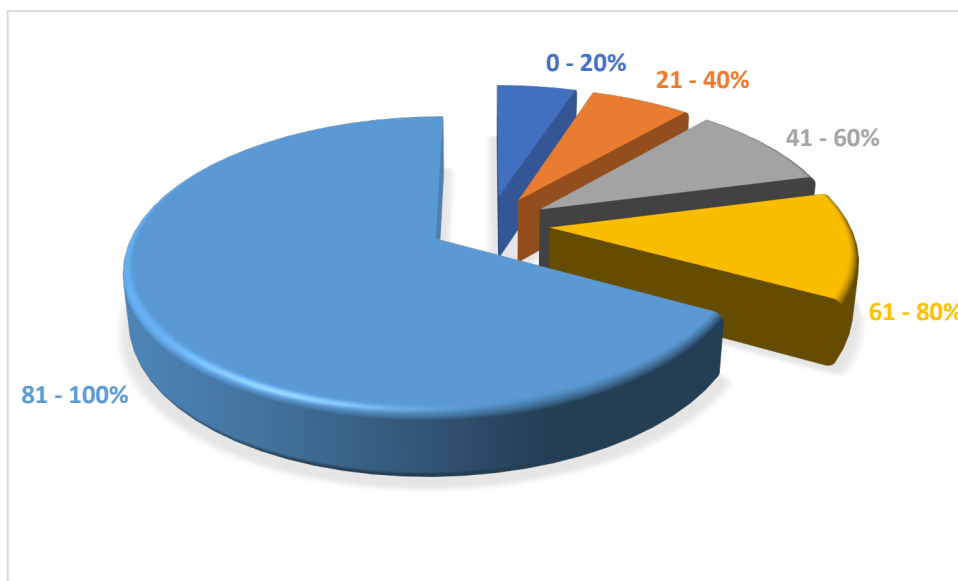


Figure 13 Percentage of Household Observing the Sabbath (Item 9).

10. Marital Status

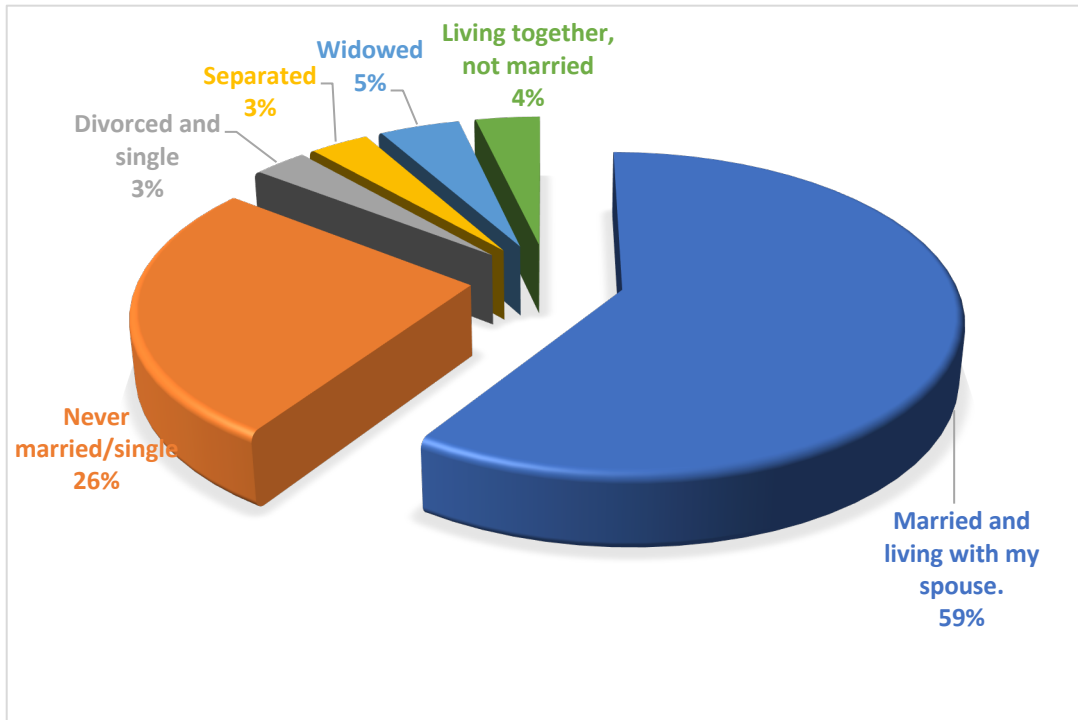


Figure 14 Marital Status (Item 10)

11. Children at Home

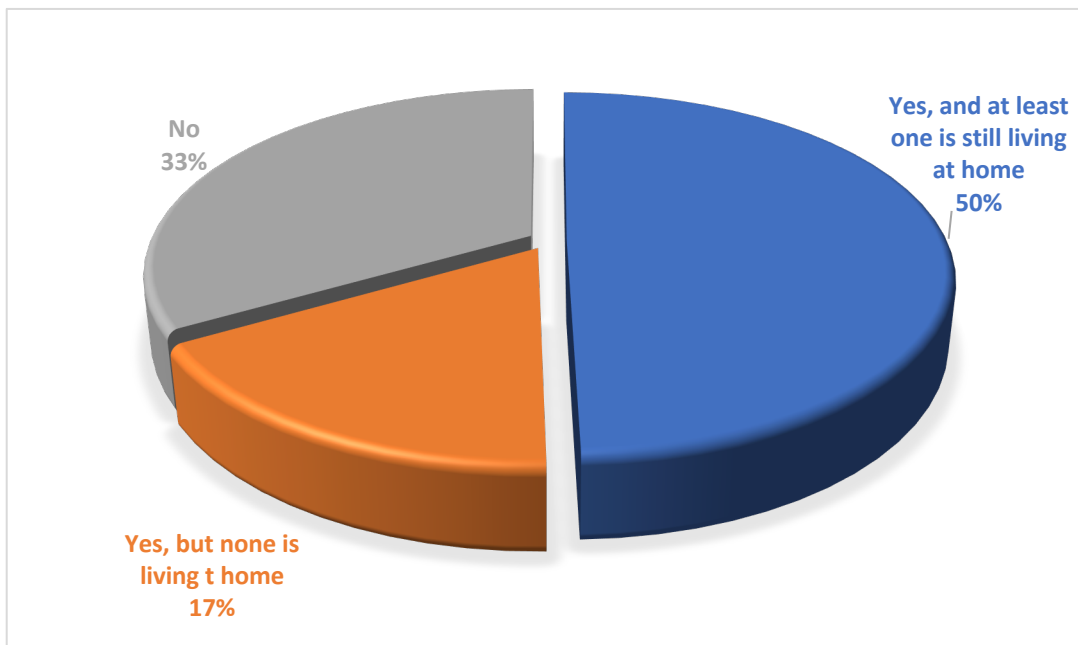
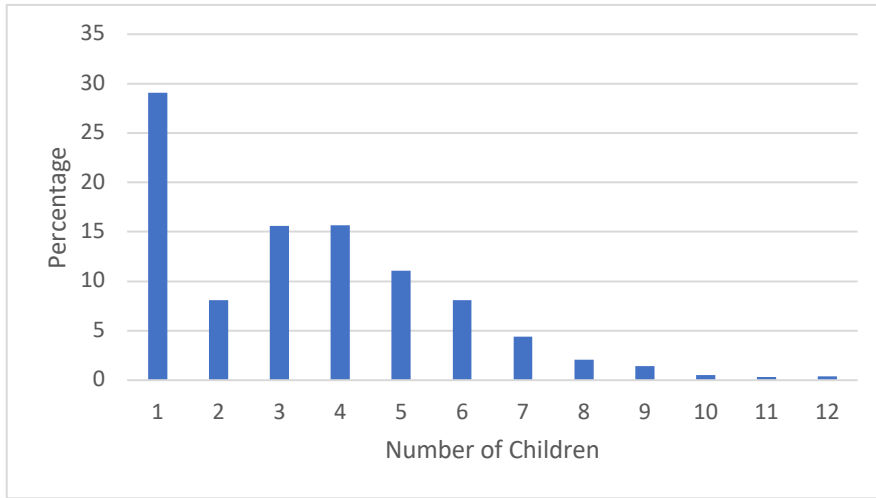


Figure 15 Children at Home

12. LIVING CHILDREN

Table 2 Number of Living Children (Item 12)



13. SDA CHILDREN

Table 3 The number of children being raised an SDA (Item 13)

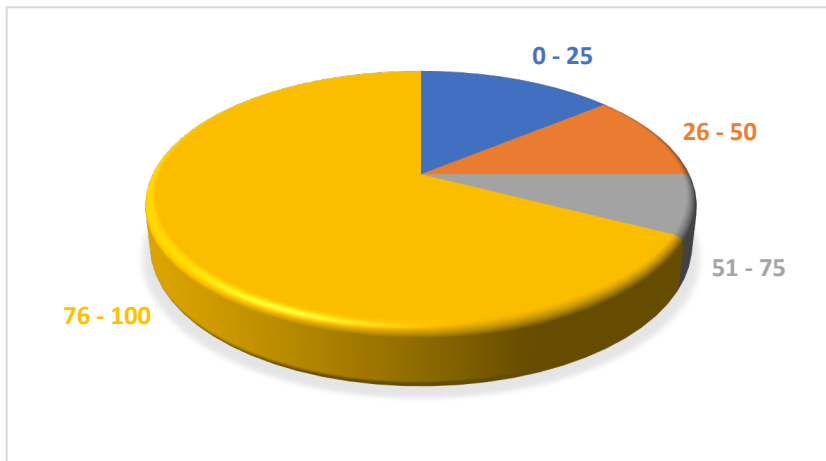
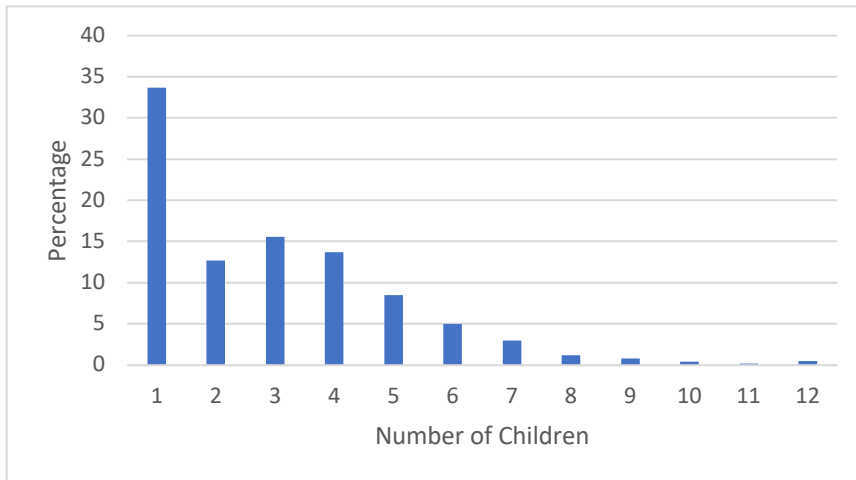


Figure 16 Percentage of Children in Households being Raised SDA

14. Identify as an SDA

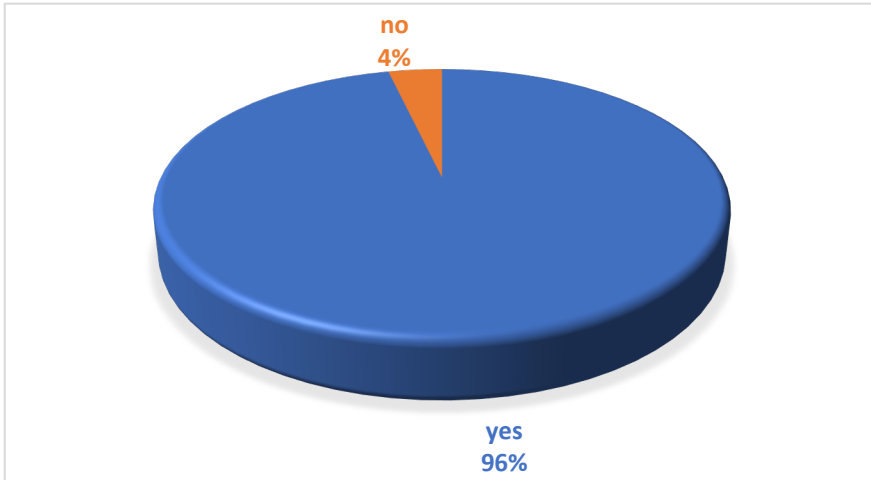


Figure 17 Do you consider yourself to be a Seventh-day Adventist?

15. Are You a Baptised SDA?

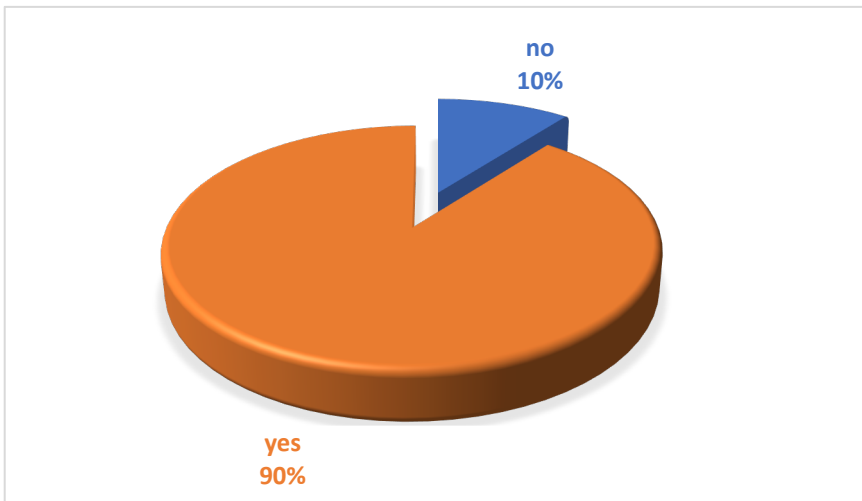


Figure 18 Are You a Baptised SDA

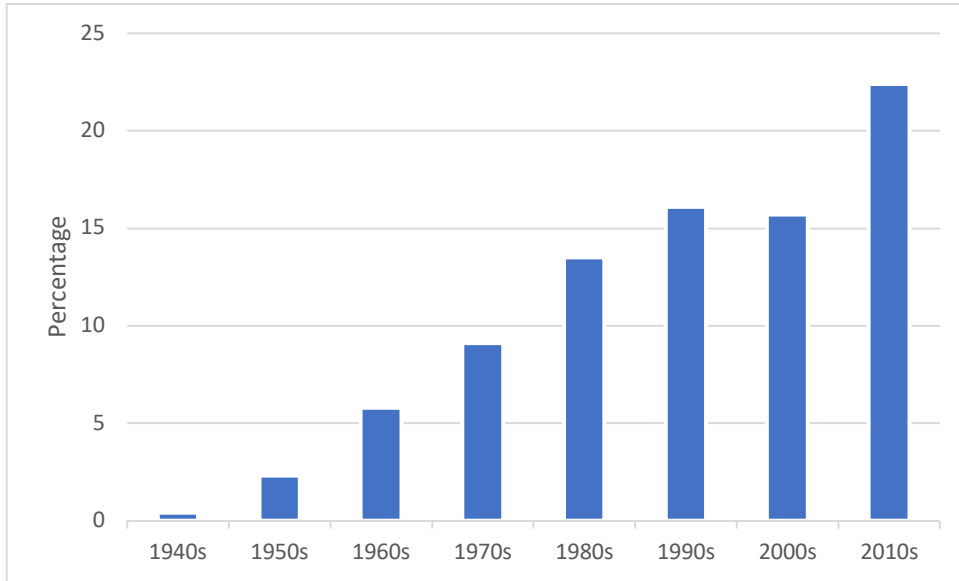


Figure 19 Baptism Date by Decade

16. Personal History

Participants indicated which of the following statements best describes your personal history with the Seventh-day Adventist Church.

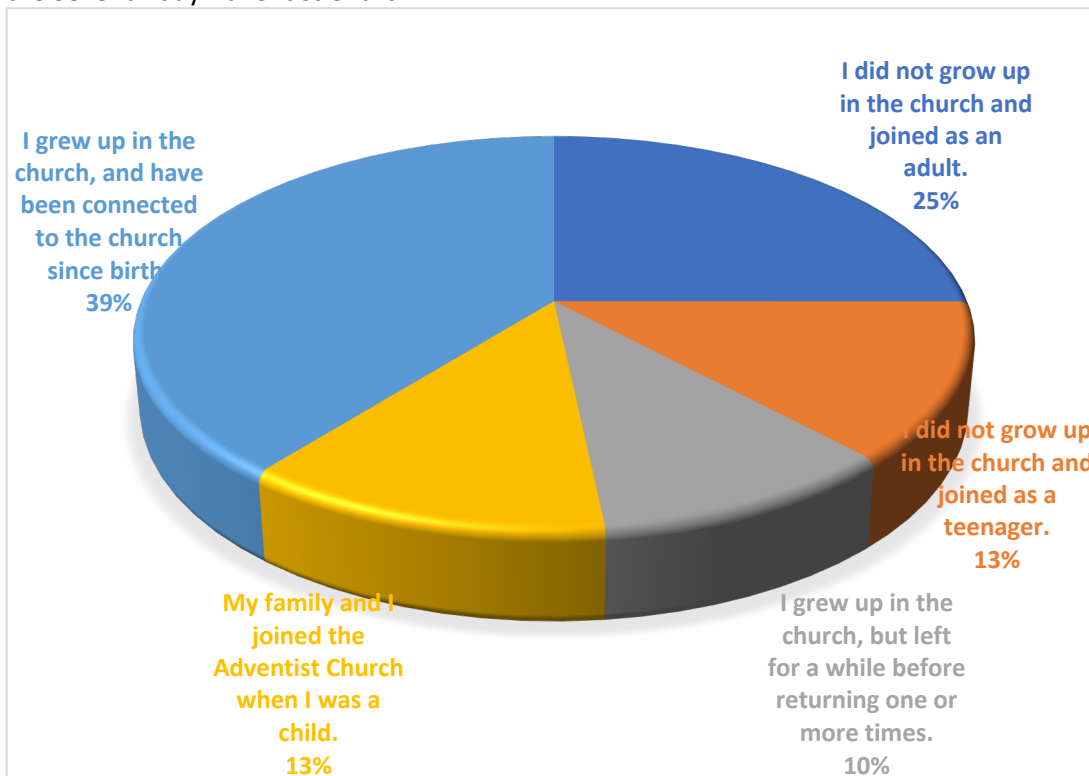


Figure 20 Personal History with the SDA church (Item 16).

17. Family History

What history does your family have with the Seventh-day Adventist Church?

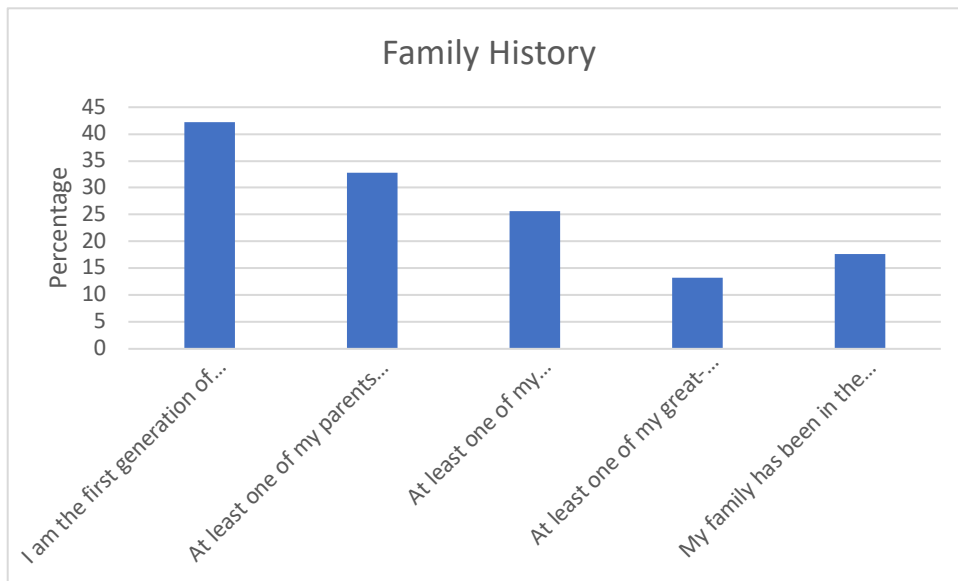


Figure 21 Family History

18. Church Office

Do you hold a church office at your local church?

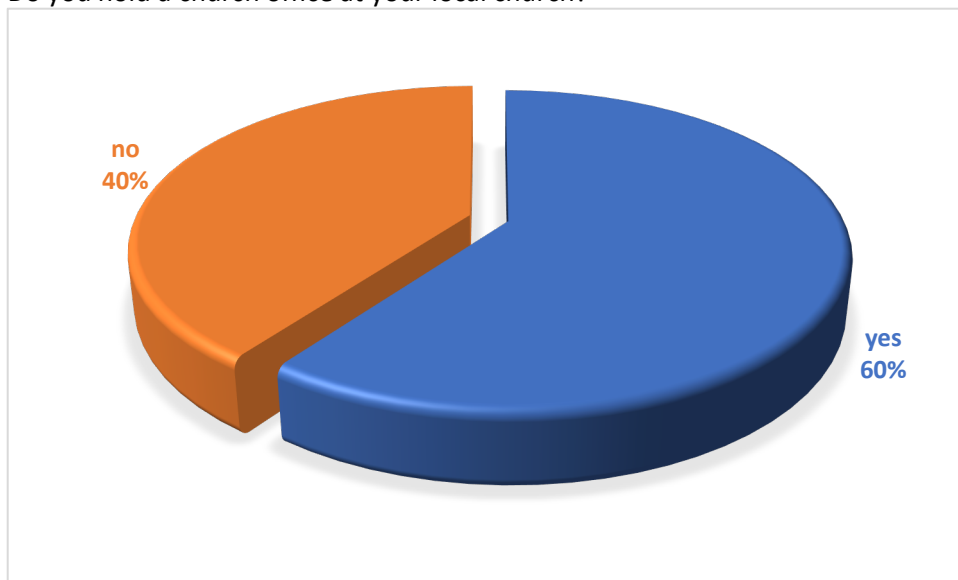


Figure 22 Church Office

19. Church Attendance

Following is the amount of people who attend Seventh-day Adventist Churches in the South Pacific Division on a typical Sabbath.

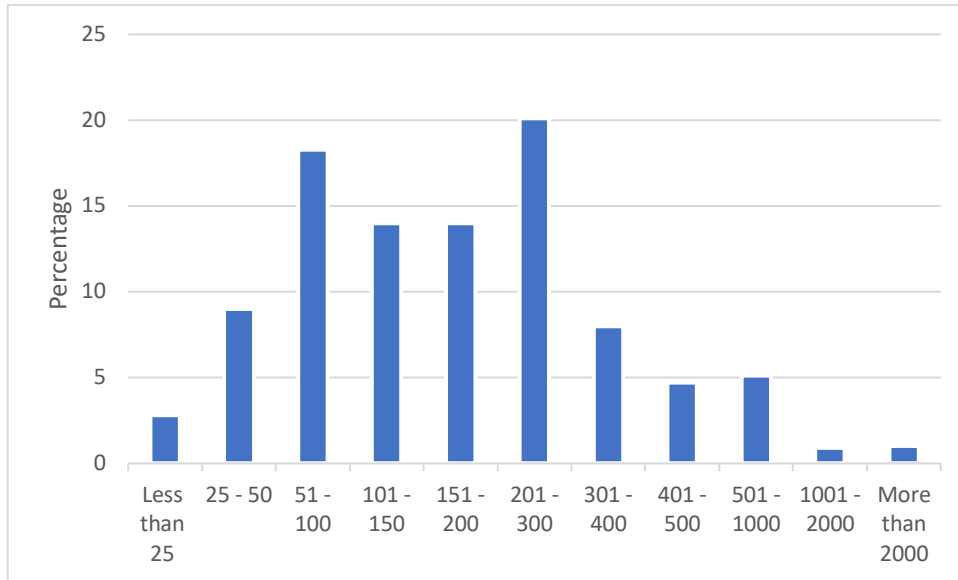


Figure 23 Church Attendance on a Typical Sabbath

20. Church Membership

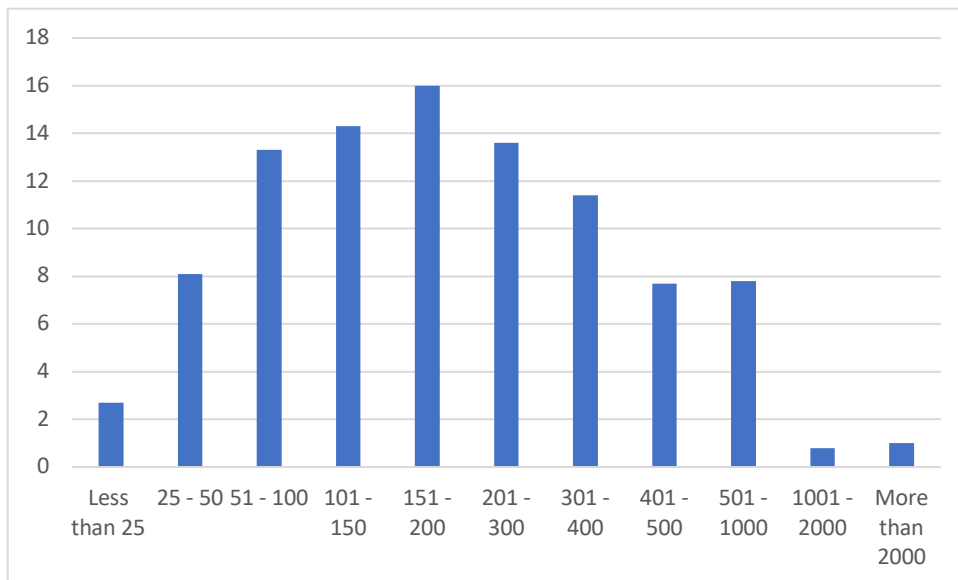


Figure 24 Church Membership Size

From the estimated church attendance and estimated church membership size it is possible to calculate the percentage of church attendance. On average, church attendance is numerically 99% of the membership (Mean=99.12, St Dev = 35.35) in the South Pacific Division.

21. Family Religious Routines

A confirmatory factor analysis was conducted on the Family Religious Routines items. All items loaded satisfactorily as demonstrated in the below table and were include in the Family Religious Routines Scale. The Cronbach's Alpha reliability for the eight-item scale was very good at 0.86.

Table 4 Family Religious Routines Factor Loadings

Items		Factor Loadings
21.01	I felt very close to one or both of my parents or guardians.	0.557
21.02	Our family was involved in community service/volunteer activities.	0.709
21.03	I was able to talk to one or both of my parents or guardians about religious issues.	0.629
21.04	Bible reading was a habitual practice in my family.	0.825
21.05	Praying before each meal was a habitual practice in my family.	0.807
21.06	Having morning or evening worship with one or more parents was a habitual practice in my family.	0.820
21.07	One or both of my parents or guardians attended church regularly.	0.753
21.08	Adventist education was an important factor in in my family.	0.627

A Family Routines Variable was constructed from the above items.

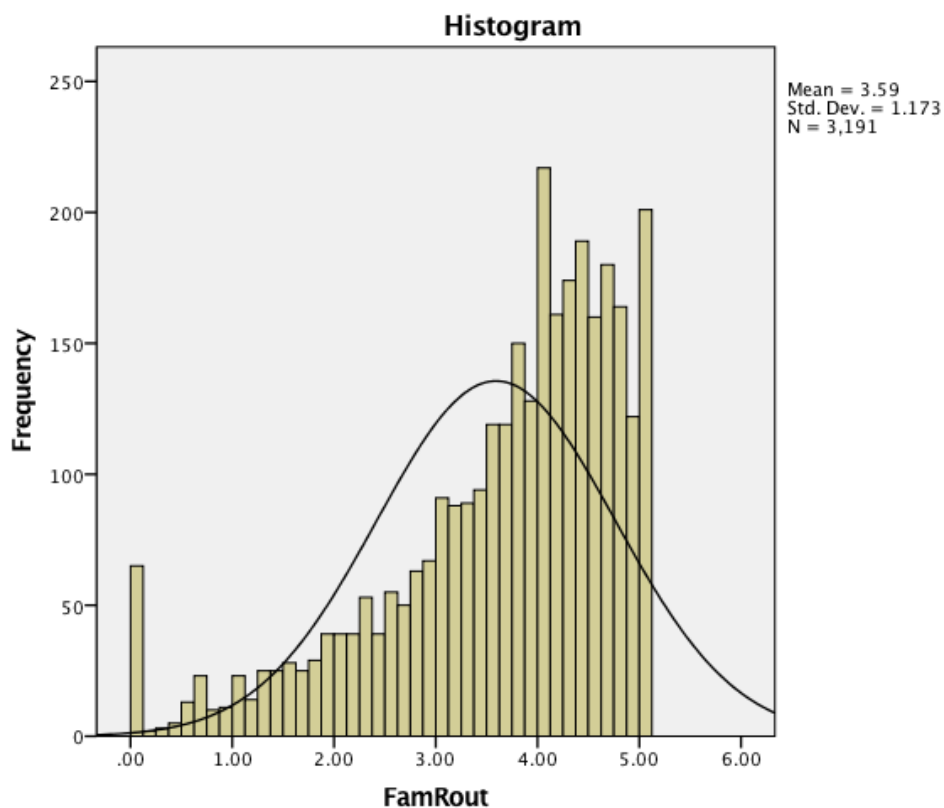


Figure 25 Family Routines

The Family Routines variable and was found to have a mean of 3.59 and a standard deviation of 1.17. The mean is above 3 (the mid-point of the 1 – 5 scale) and indicated that on average families have a positive religious experience in their homes.

Table 5 Items used for the construction of the Family Routines Scale

Item	Mean	St Dev
I felt very close to one or both of my parents or guardians.	4.07	1.31
Our family was involved in community service/volunteer activities.	3.39	1.63
I was able to talk to one or both of my parents or guardians about religious issues	3.56	1.57
Bible reading was a habitual practice in my family.	3.40	1.62
Praying before each meal was a habitual practice in my family.	4.11	1.42
Having morning or evening worship with one or more parents was a habitual practice in my family.	3.36	1.67
One or both of my parents or guardians attended church regularly.	3.83	1.63
Adventist education was an important factor in in my family.	3.04	2.01

22. Family Situation

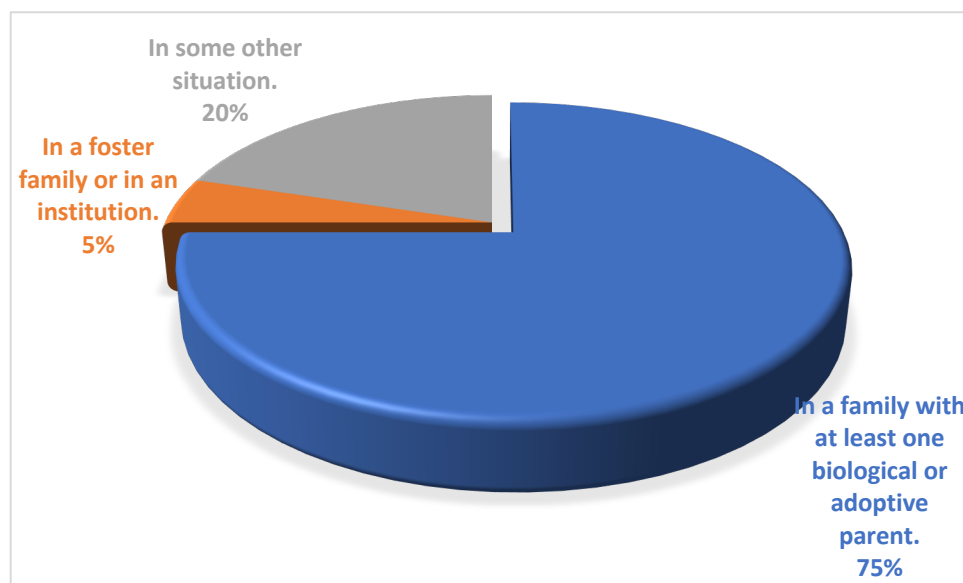


Figure 26 Family Situation

An analysis of variance was carried out to determine if there is a significant difference in family routines based on the family situation. The one-way ANOVA ($F(2,2905) = 4.302, p = 0.01$) indicated that there were statistically significant differences between group means. A Tukey post hoc test revealed that the group where people had at least one biological parent or adoptive parent scored significantly higher on the measure of family religious routines than the other groups ($p=0.05$).

23. Parenting Style

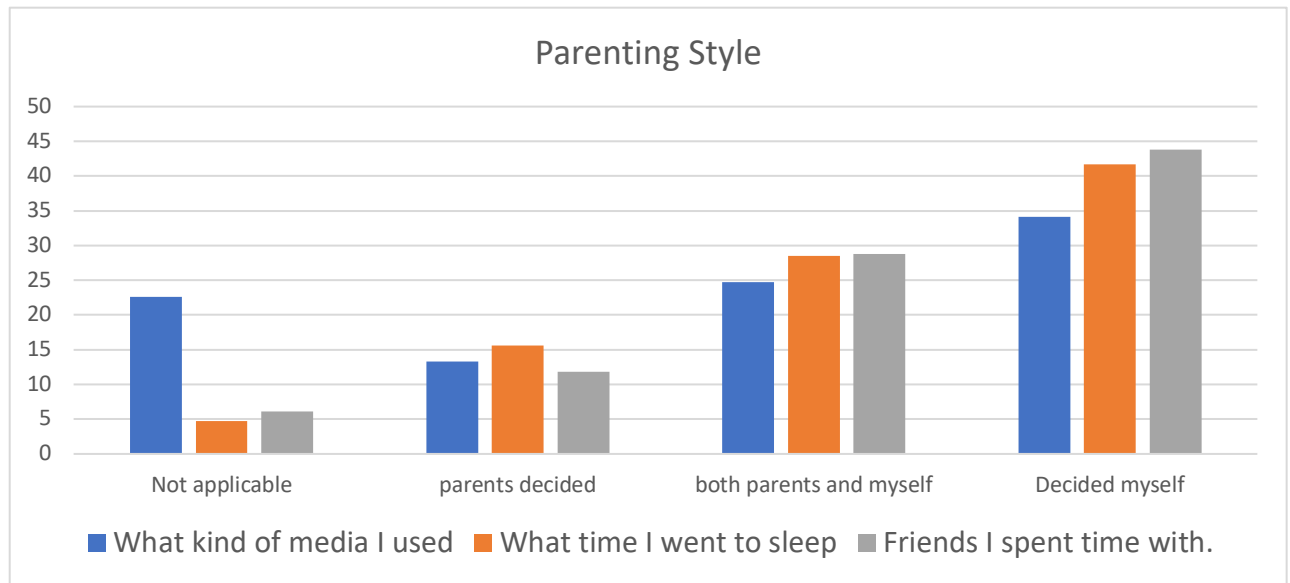


Figure 27 Parenting Style

SECTION 3: RELIGIOUS BEHAVIOR/ROLES

24. Social Religious Activities

A confirmatory factor analysis was conducted on the Social Religious Activities items. All items loaded satisfactorily as demonstrated in the below table and were included in the Social Religious Activities Scale. The Cronbach's Alpha reliability for the eight-item scale was very good at 0.87.

Table 6 Social Religious Activities Factor Loadings

Items		Factor Loadings
24.01	Attended church services.	.412
24.02	Attended Sabbath School.	.451
24.03	Attended a small group organized through my church.	.623
24.04	Attended a prayer meeting at my local church.	.629
24.05	Attended a public evangelistic meeting in my area.	.553
24.06	Attended a youth meeting in my area.	.551
24.07	Attended a Pathfinders' meeting.	.469
24.08	Participated in communion service.	.487
24.09	Ate with members of the church other than my family.	.505
24.10	Helped with a church ministry on Sabbath.	.648
24.11	Helped with a church ministry during the week.	.704
24.12	Received a visit from my pastor.	.509
24.13	Received a visit from a church elder.	.559
24.14	Received a visit from a church member.	.538
24.15	Witnessed to non-Adventists in my community.	.592
24.16	Spent time forming new friendships with non-Adventists in my community.	.496
24.17	Spent time meeting the needs of non-Adventists in my community.	.530
24.18	Supported another church member to grow spiritually.	.650

A Social Religious Activities variable was constructed from the above items and was found to have a mean of 2.49 and a standard deviation of 1.03. The mean is below 3 (the mid-point of the 0 – 6 scale) and indicated that on average families engage in social religious activities between once a quarter and once a month.

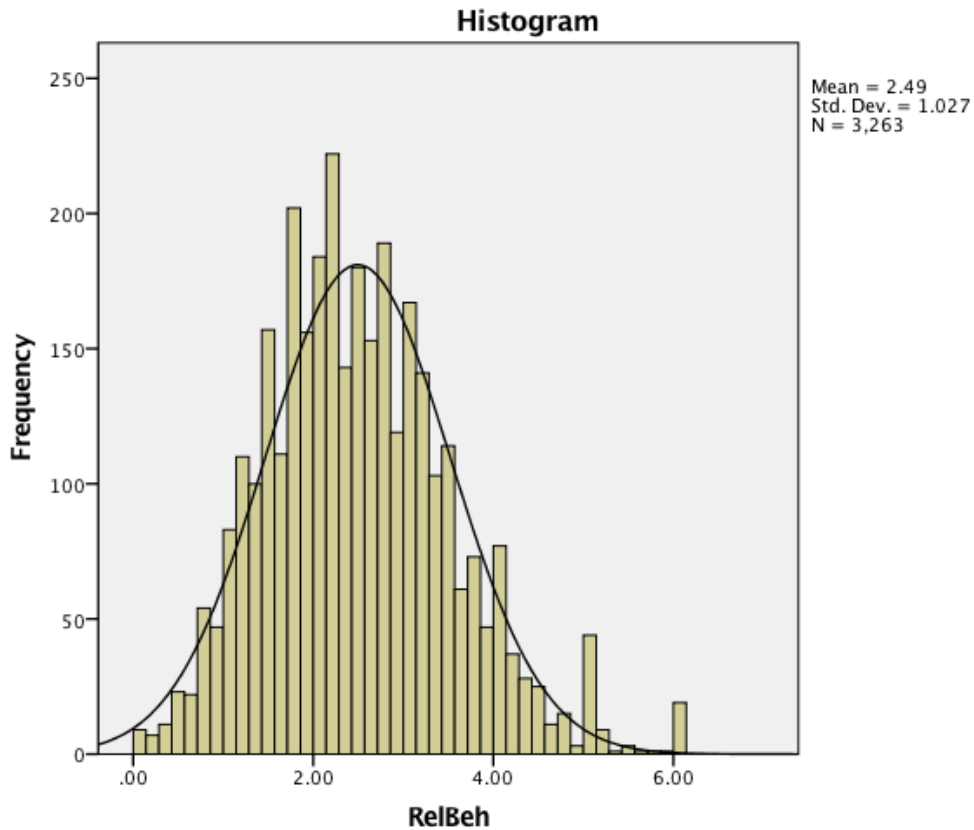


Table 7 Items that make up the Social Religious Activities scale

Item	Mean	StdDev
24.01. Attended church services.	4.72	1.026
24.02. Attended Sabbath School.	4.38	1.244
24.03. Attended a small group organized through my church.	2.73	2.008
24.04. Attended a prayer meeting at my local church.	2.77	2.053
24.05. Attended a public evangelistic meeting in my area.	1.83	1.685
24.06. Attended a youth meeting in my area.	1.83	1.853
24.07. Attended a Pathfinders' meeting.	1.46	1.835
24.08. Participated in communion service.	2.06	1.305
24.09. Ate with members of the church other than my family.	2.68	1.714
24.10. Helped with a church ministry on Sabbath.	2.82	1.913
24.11. Helped with a church ministry during the week.	2.32	1.998
24.12. Received a visit from my pastor.	.96	1.446
24.13. Received a visit from a church elder.	.89	1.405
24.14. Received a visit from a church member.	1.51	1.682
24.15. Witnessed to non-Adventists in my community.	2.49	1.856
24.16. Spent time forming new friendships with non-Adventists in my community.	2.75	1.899
24.17. Spent time meeting the needs of non-Adventists in my community.	2.27	1.760
24.18. Supported another church member to grow spiritually.	2.79	1.950

Items 24.15, 24.16, and 24.17 are measures of engagement in Christ's Method of Outreach. A confirmatory factor analysis was conducted on these items. All items loaded satisfactorily as

demonstrated in the below table and were include in the Christ’s Method of evangelism Scale. The Cronbach's Alpha reliability for the eight-item scale was good at 0.763.

Table 8 Factor Loads for Christ's Method of Evangelism Scale

24.15.	Witnessed to non-Adventists in my community.	.800
24.16.	Spent time forming new friendships with non- Adventists in my community.	.838
24.17.	Spent time meeting the needs of non-Adventists in my community.	.833

A mean of 2.56 (St Dev=1.54) is below 3 (the mid-point of the 0 – 6 scale) and indicates that on average families engage in Christ’s method of evangelism between once a quarter and once a month.

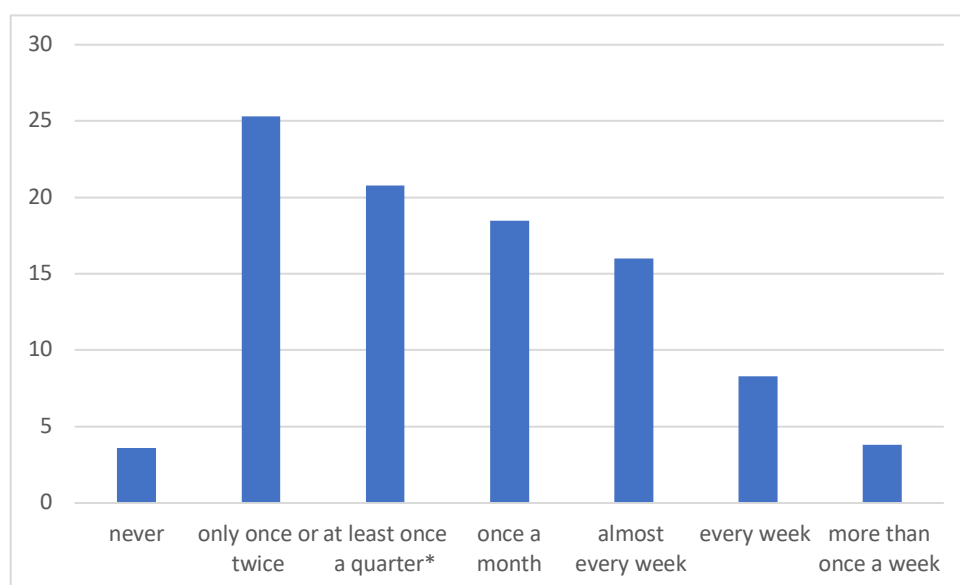


Figure 28 Christ's Method of Evangelism

25. Personal & Family Religious Activities

A confirmatory factor analysis was conducted on the Personal and Religious Activities items. All items loaded satisfactorily as demonstrated in the below table and were include in the Personal and Religious Activities Scale. The Cronbach's Alpha reliability for the eight-item scale was very good at 0.86.

Table 9 Personal and Family Religious Activities Factor Loadings

25.01.	Read the Bible.	.429
25.02.	Engage in personal devotions.	.395
25.03.	Study the Sabbath School lesson.	.401
25.04.	Read the writings of Ellen G. White.	.570
25.05.	Have morning or evening worship with members of my family.	.326
25.06.	Have personal prayer (at times other than meals).	.322
25.07.	Read religious writings by Adventist authors.	.607
25.08.	Read religious writings by other Christian authors.	.540

25.09.	Read <i>Adventist World</i> magazine or website	.652
25.10.	Use the <i>Adventist Review</i> website.	.657
25.11.	Read a magazine or newsletter from my local union or conference.	.647
25.12.	Read or respond to Adventist social media.	.634
25.13.	Read or respond to other Christian social media.	.541
25.14.	Use social media for any purpose.	.276
25.15.	Listen to an Adventist radio broadcast.	.410
25.16.	Listen to other Christian radio broadcasts.	.357
25.17.	Watch Hope Channel programming.	.550
25.18.	Watch other Adventist television channels or programming.	.559
25.19.	Watch other Christian television programs.	.512
25.20.	Use a mobile device like a cell phone or tablet for Bible study or personal devotions.	.450
25.21.	Use a mobile device like a cell phone or tablet for reading Ellen White's writings.	.547
25.22.	Spend time thinking about Jesus' life.	.387
25.23.	Worship at a church of another denomination	.158
25.24.	Read the Record	.468
25.25.	Check the SPD website	.572
25.26.	Recommend Christian media to non-Adventist friends	.549

A Personal and Family Religious Activities variable was constructed from the above items and was found to have a mean of 1.43 and a standard deviation of 0.62. The mean is below 2 (the mid-point of the 0 – 4 scale) and indicated that on average families engage in social religious activities between less than and once a month and about once a week.

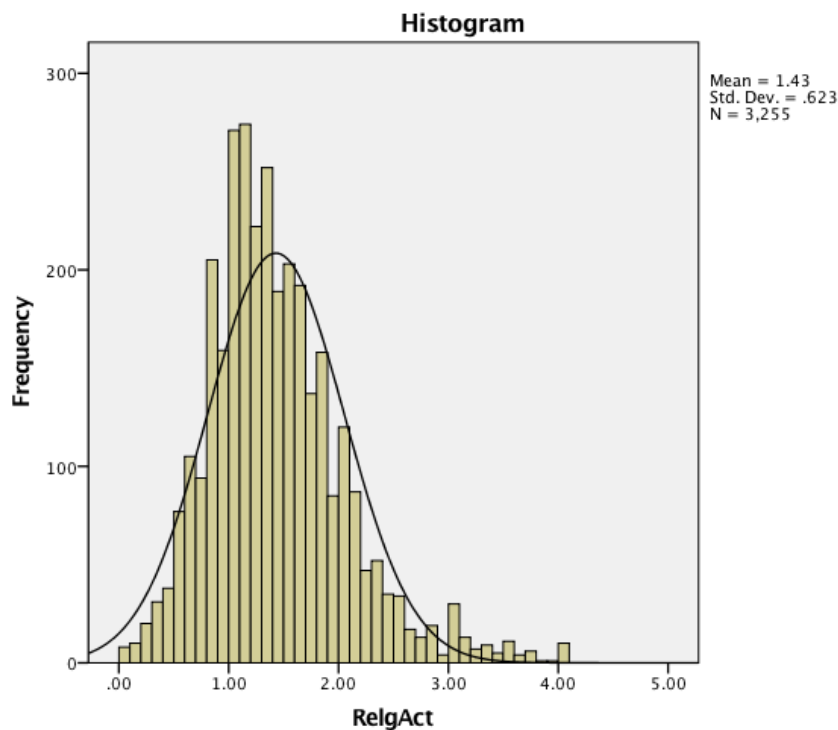


Figure 29 Personal and Family Religious Activities

Table 10 Items that make up the Personal and Family Religious Activities Scale

Item	Mean	St Dev
25.01. Read the Bible.	3.05	1.12
25.02. Engage in personal devotions.	3.03	1.24
25.03. Study the Sabbath School lesson.	2.46	1.49
25.04. Read the writings of Ellen G. White.	1.46	1.36
25.05. Have morning or evening worship with members of my family.	2.51	1.54
25.06. Have personal prayer (at times other than meals).	3.35	1.03
25.07. Read religious writings by Adventist authors.	1.61	1.31
25.08. Read religious writings by other Christian authors.	1.24	1.20
25.09. Read <i>Adventist World</i> magazine or website	0.98	1.10
25.10. Use the <i>Adventist Review</i> website.	0.45	0.91
25.11. Read a magazine or newsletter from my local union or conference.	0.89	1.08
25.12. Read or respond to Adventist social media.	0.74	1.09
25.13. Read or respond to other Christian social media.	0.70	1.10
25.14. Use social media for any purpose.	1.40	1.56
25.15. Listen to an Adventist radio broadcast.	1.27	1.44
25.16. Listen to other Christian radio broadcasts.	1.13	1.30
25.17. Watch Hope Channel programming.	0.88	1.27
25.18. Watch other Adventist television channels or programming.	0.77	1.22
25.19. Watch other Christian television programs.	0.60	1.03
25.20. Use a mobile device like a cell phone or tablet for Bible study or personal devotions.	1.44	1.59
25.21. Use a mobile device like a cell phone or tablet for reading Ellen White's writings.	0.89	1.37
25.22. Spend time thinking about Jesus' life.	3.09	1.12
25.23. Worship at a church of another denomination	0.38	0.81
25.24. Read the Record	0.91	1.04
25.25. Check the SPD website	0.29	0.72
25.26. Recommend Christian media to non-Adventist friends	1.13	1.13

26. Program Awareness

There are several specific programs and initiatives that have been developed by the Seventh-day Adventist Church. The following table shows the mean and standard deviation for each of these items (0 – 2 scale).

Table 11 Program Awareness

Item	Mean	St Dev
26.01. Reach the World Strategic Plan 2015-2020.	1.63	0.745
26.02. Total Member Involvement.	2.27	0.831
26.03. Revival and Reformation.	2.20	0.813
26.04. Mission to the Cities.	1.77	0.755
26.05. Centers of Influence.	1.58	0.725
26.06. Christ’s Method of Reaching People.	1.96	0.830
26.07. Comprehensive Health Ministries.	1.89	0.779

The following graphs show the member awareness distribution for each of the items.

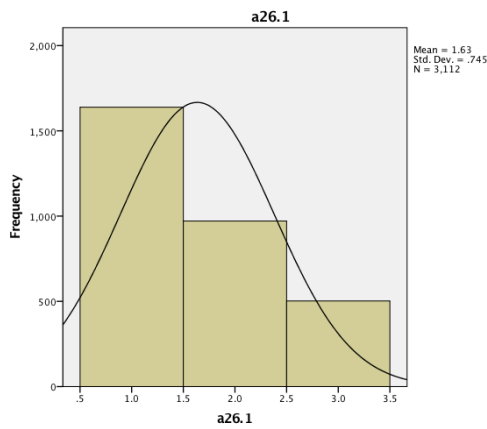


Figure 30 Reach the World Strategic Plan 2015 - 2020

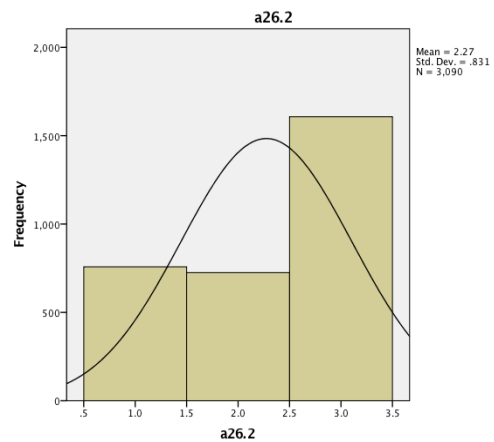


Figure 31 Total Member Involvement

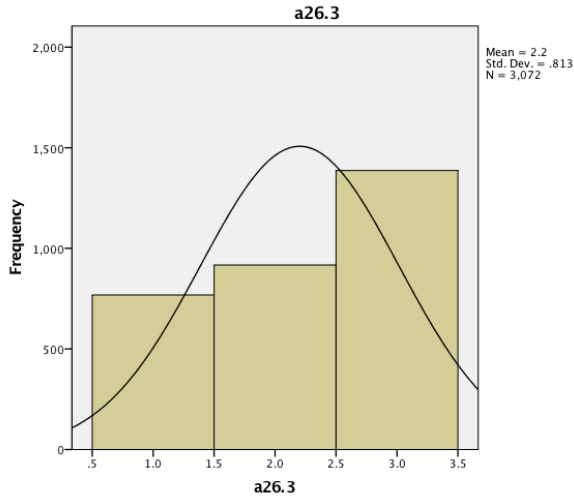


Figure 32 Revival and Reformation

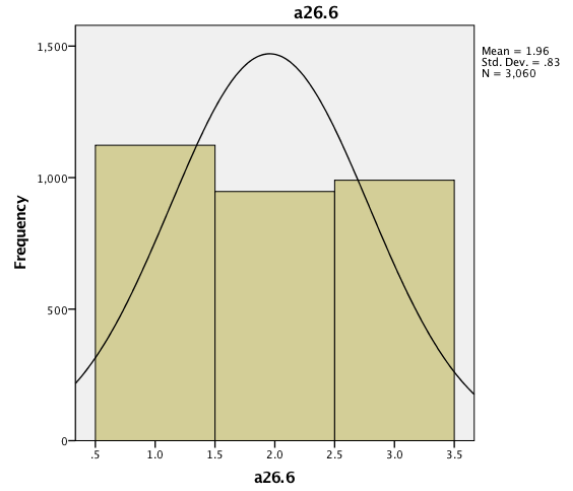


Figure 35 Christ's Method of Reaching People

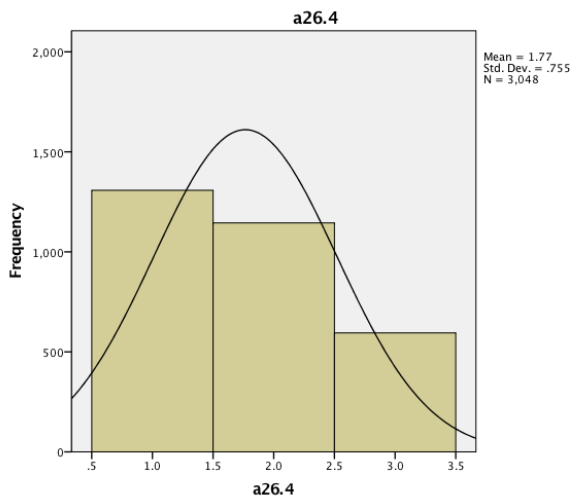


Figure 33 Mission to the Cities

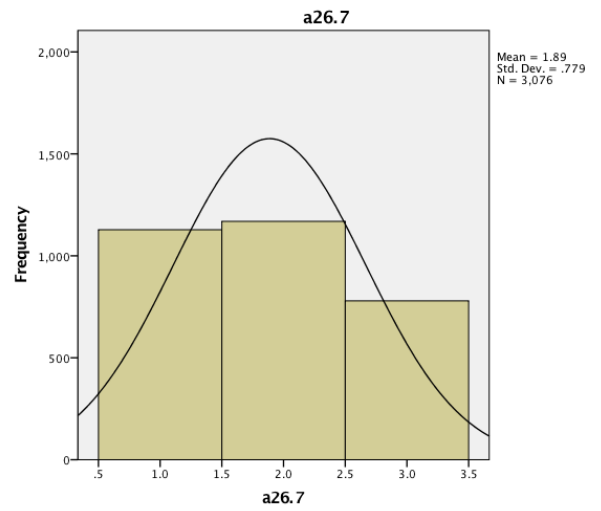


Figure 36 Comprehensive Health Ministries

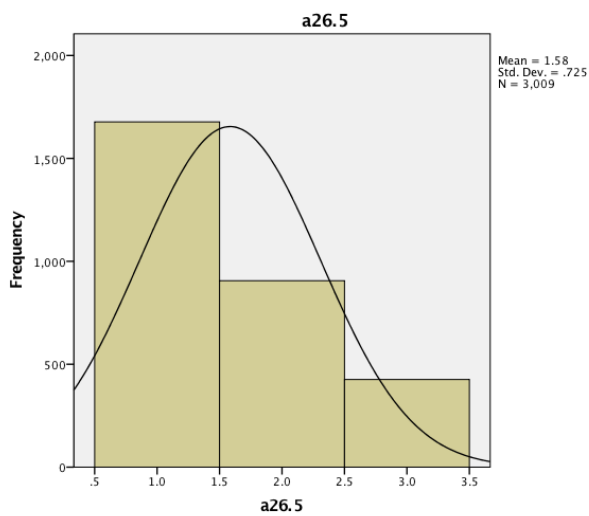


Figure 34 Centers of Influence

SECTION 4: RELIGIOUS ATTITUDES AND EXPERIENCES

27. Church Experiences

Participants were asked about their experiences at church.

A confirmatory factor analysis was conducted on the Church Experiences items. All items loaded satisfactorily as demonstrated in the below table and were include in the Personal and Religious Activities Scale. The Cronbach's Alpha reliability for the 22 item scale was very good at 0.87.

Table 12 Church Experiences Factor Loadings

Item	Factor Loading
a27.1 Sabbath School teachers care	.466
a27.2 pastor cares	.512
a27.3 other people care	.423
a27.4 proud of my church role and reputation	.551
a27.6 church plans activities for family	.477
a27.7 local church part worldwide church.	.465
a27.8 pastor(s) and lay leaders work together well	.633
a27.9 pastor(s) well qualified to lead	.586
a27.10 lay leaders well qualified to lead	.577
a27.11 youth play an important role	.579
a27.12 youth are actively involved in mission	.607
a27.13 church program for preparing young leaders	.695
a27.14 conference program for preparing young leaders	.661
a27.15 union program for preparing young leaders	.627
a27.16 apply Bible to daily life	.425
a27.17 apply SS lessons to daily life	.467
a27.18 apply Ellen White's writings to daily life	.400
a27.19 Although I am religious, it does not affect my daily life.	.317
a27.20 church ability to communicate across cultures	.504
a27.21 church training on conflict resolution	.588
a27.22 church training on nurture and discipling a27.23	.661
a27.23 church training on Christ's method of evangelism	.654

A Church Experiences variable was constructed from the above items and was found to have a mean of 3.85 and a standard deviation of 0.525. The mean is above 3 (the mid-point of the 1 – 5 scale) and indicated that on average families have a positive church experience.

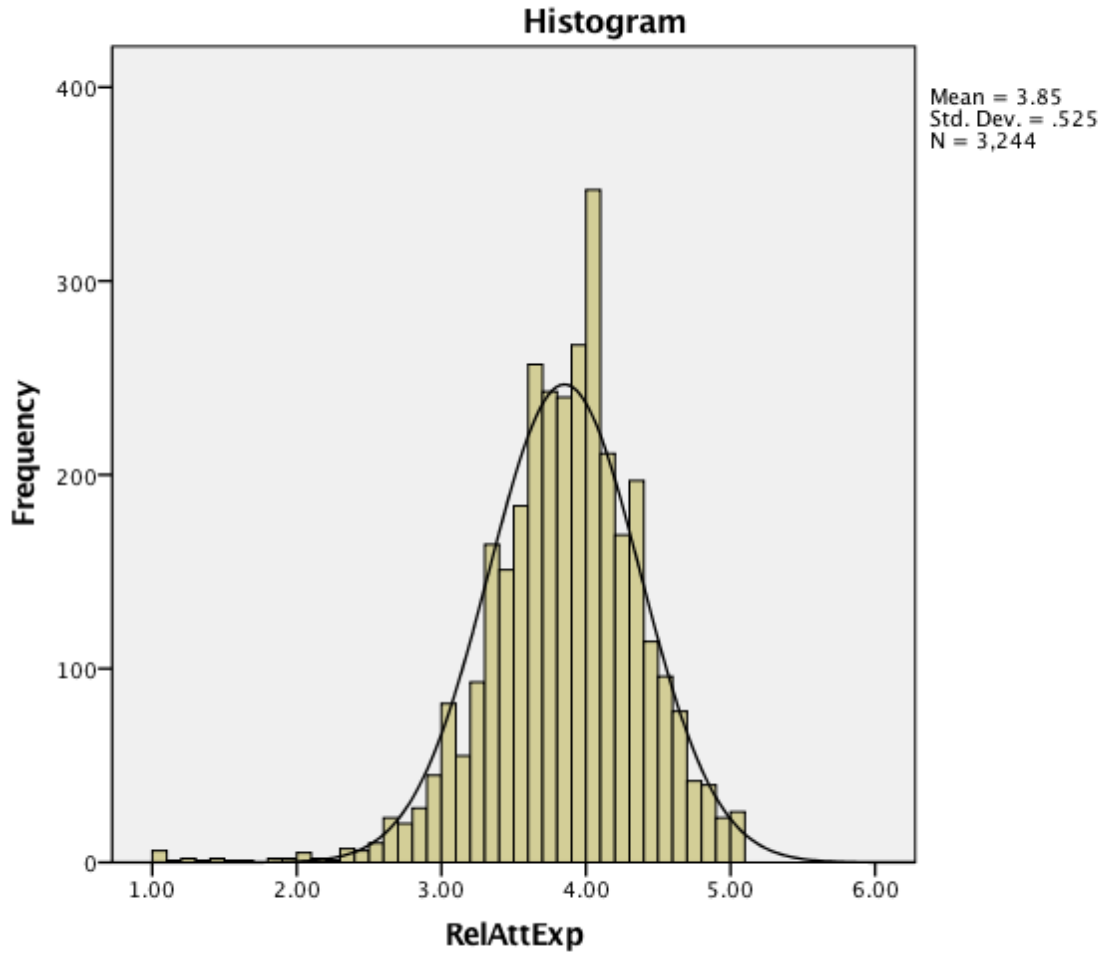


Figure 37 Church Experiences

Below are the means for the items that contributed to the Church Experience scale. Item 5 failed to load and was omitted from the Church Experience Scale.

Table 13 Items that contribute to the Church Experience Scale

Item		Mean	St Dev
a27.1	Sabbath School teachers care	3.89	0.98
a27.2	pastor cares	4.01	0.95
a27.3	other people care	4.10	0.88
a27.4	proud of my church role and reputation	4.20	0.90
a27.6	church plans activities for family	3.70	1.12
a27.7	local church part worldwide church.	4.54	0.76
a27.8	pastor(s) and lay leaders work together well	4.05	0.93
a27.9	pastor(s) well qualified to lead	4.27	0.84
a27.10	lay leaders well qualified to lead	3.94	0.86
a27.11	youth play an important role	3.84	0.96
a27.12	youth are actively involved in mission	4.03	0.92

a27.13	church program for preparing young leaders	3.91	1.02
a27.14	conference program for preparing young leaders	3.90	0.94
a27.15	union program for preparing young leaders	3.82	0.94
a27.16	apply Bible to daily life	4.15	0.81
a27.17	apply SS lessons to daily life	3.96	0.89
a27.18	apply Ellen White's writings to daily life	3.69	1.01
a27.19	Although I am religious, it does not affect my daily life.	2.97	1.33
a27.20	church ability to communicate across cultures	3.69	1.01
a27.21	church training on conflict resolution	3.25	1.08
a27.22	church training on nurture and discipling	3.63	1.05
a27.23	My local church offers training on Christ's method of evangelism (mingling, showing sympathy, meeting needs, winning confidence, and teaching the Gospel).	3.85	1.02

28. Spirit of Prophecy Accessibility

Participants were asked about their access to books authored by Ellen White.

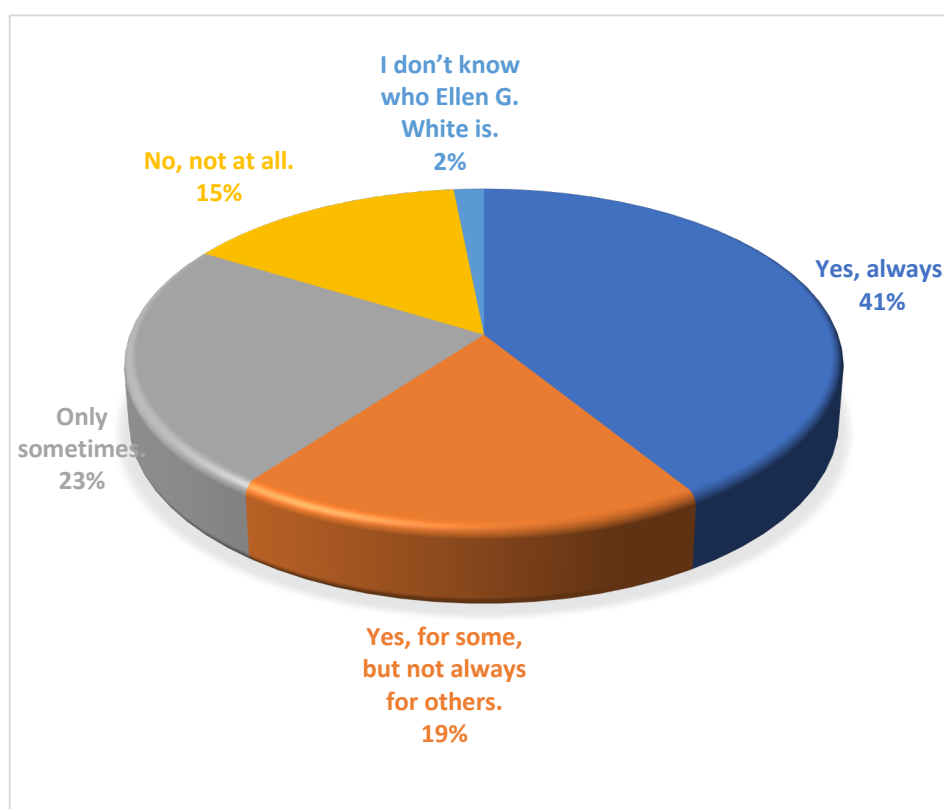


Figure 38 Access to Ellen White's Books

While many people did report reasonable access to books written by Ellen White an analysis of variance did indicate that there is a significant difference to accessing these books between the different Unions ($F(3,3151)=206.79$, $p = 0.00$). A Tukey post-hoc test revealed that Australia and New Zealand enjoy the best access.

29. Sermon Topics

Participants were asked how often their pastor preached on the following topics.

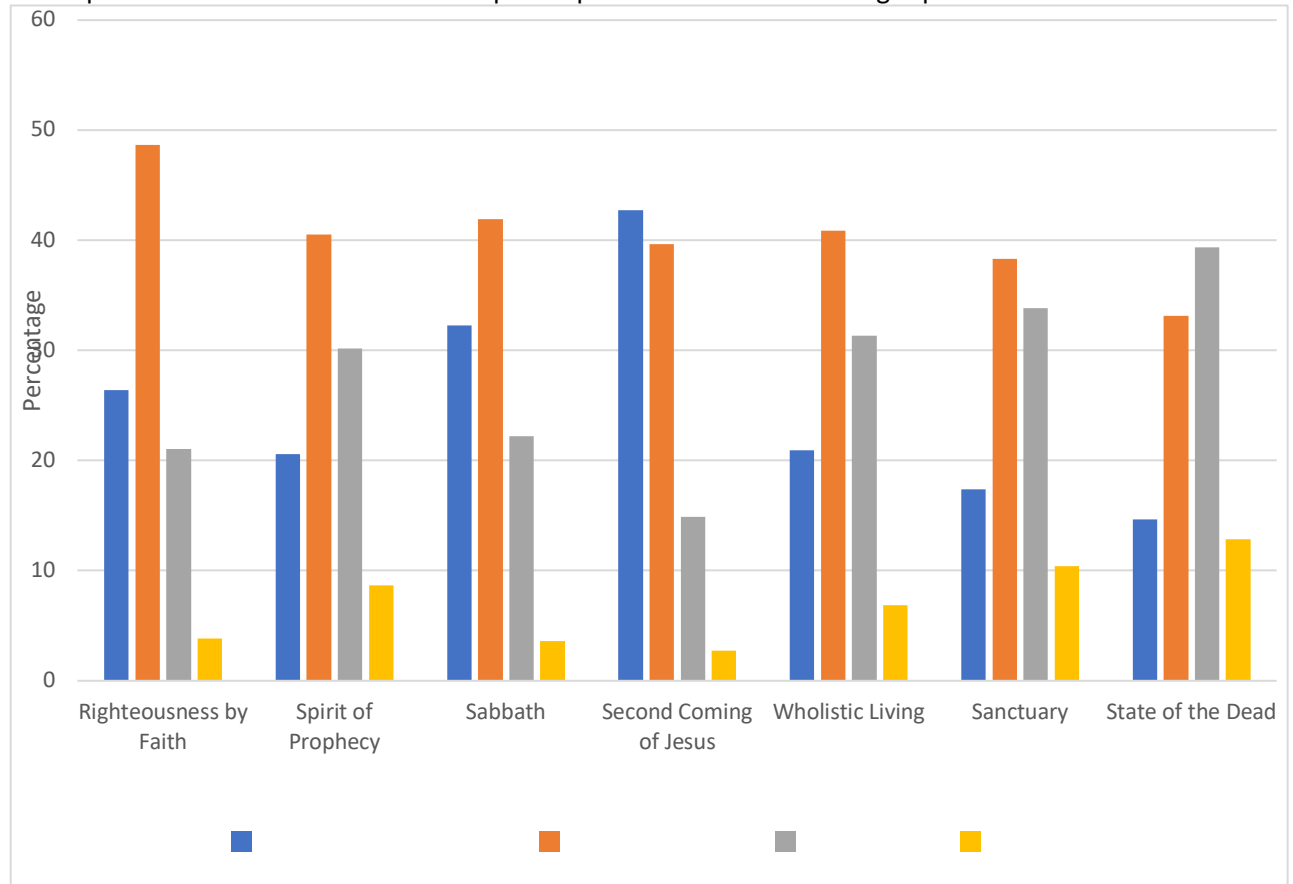


Figure 39 Sermon Topics

30. Commitment to Christ

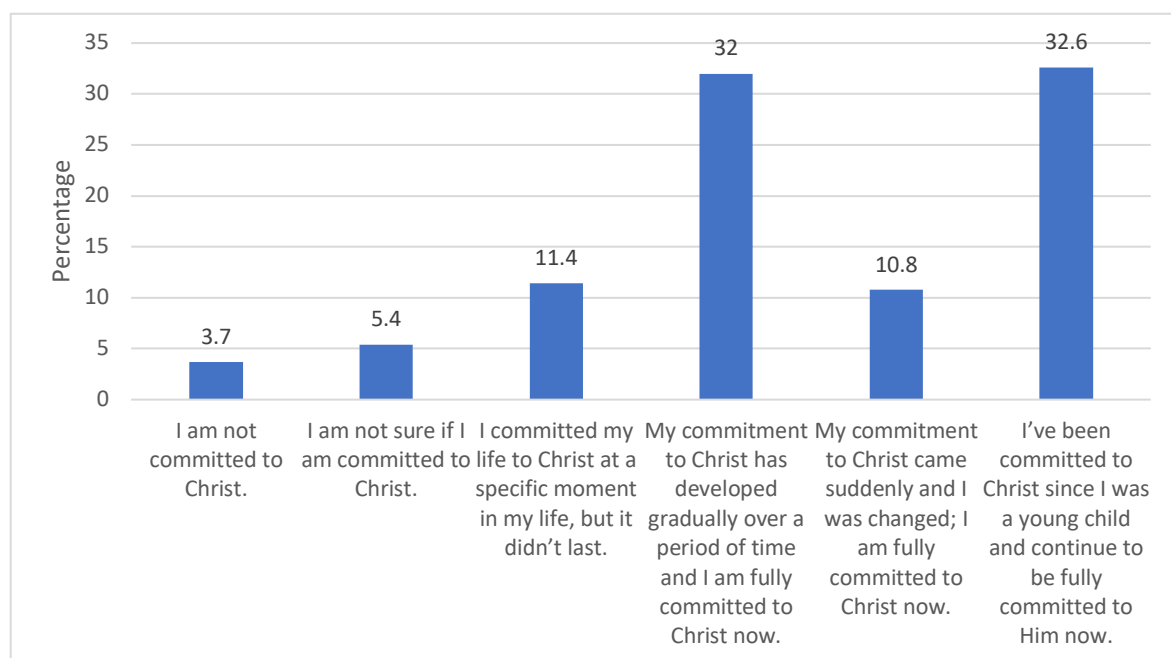


Figure 40 Commitment to Christ

31. Involvement

Participants were asked about their level of involvement in the church outreach activities. Results are summarised in the figure below.

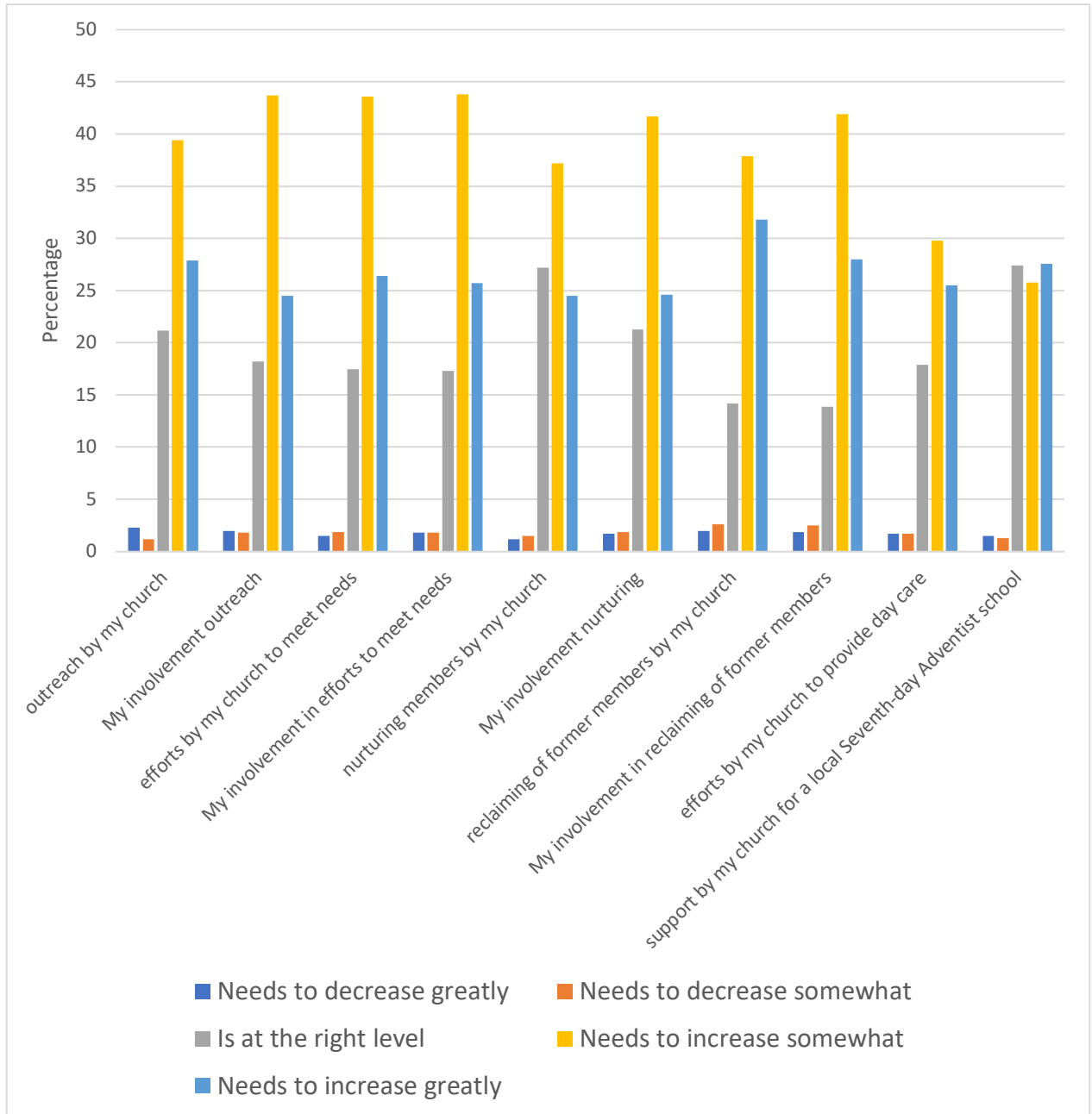


Figure 41 Involvement

32. Nurture Scale

Participants were asked about their experiences and the way that they feel nurtured at church. A confirmatory factor analysis was conducted on the Nurture items. All items loaded satisfactorily as demonstrated in the below table and were include in the Nurture Scale. The Cronbach's Alpha reliability for the 9-item scale was very good at 0.83.

Table 14 Nurture Factor Loadings

Items	Factor Loading
a32.1 ...I feel free to be who I am.	.585
a32.2 ...I am able to use my spiritual gifts.	.686
a32.3 ...I feel loved and cared about.	.737
a32.5 ...I have a say in what happens, and I can voice my opinion.	.580
a32.7 ...I am able to help and serve other people in important ways.	.659
a32.8 ...I feel a lot of closeness and unity.	.731
a32.10 ...I feel others in the church want me to be there	.617
a32.11 ...I feel I experience God's grace	.635
a32.12 ...I feel that the church wants to help me grow as a disciple of Jesus	.669

The Nurture variable was constructed from the above items and was found to have a mean of 4.00 and a standard deviation of 0.727. The mean is above 3 (the mid-point of the 1 – 5 scale) and indicated that on average families have a positive experience at church.

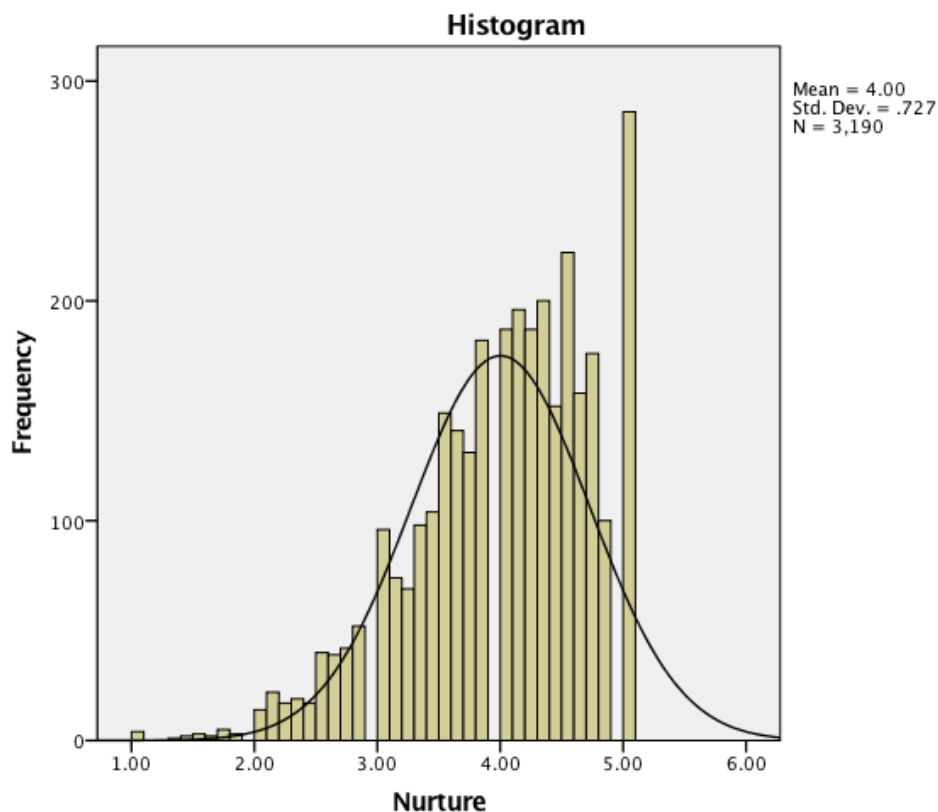


Figure 42 Nurture

Below are the means for the items that contributed to the Nurture scale.

Table 15 Items that contribute to the Nurture experience at church

Item	Mean	St Dev
a32.1 ...I feel free to be who I am.	4.14	1.13
a32.2 ...I am able to use my spiritual gifts.	3.92	1.17
a32.3 ...I feel loved and cared about.	4.01	1.08
a32.4 ...I often feel inadequate or incompetent.	2.16	1.26
a32.5 ...I have a say in what happens, and I can voice my opinion.	3.50	1.29
a32.6 ...I often feel a lot of distance in my relationships with other people	2.40	1.3
a32.7 ...I am able to help and serve other people in important ways.	3.92	1.08
a32.8 ...I feel a lot of closeness and unity.	3.78	1.14
a32.9 ...I feel pressured to behave certain ways.	2.71	1.35
a32.10 ...I feel others in the church want me to be there	3.80	1.17
a32.11 ...I feel I experience God’s grace	5.54	0.83
a32.12 ...I feel that the church wants to help me grow as a disciple of Jesus	4.42	0.94

33. Satisfaction

Participants were asked about their level of satisfaction with the church. This single item was found to have a mean of 4.21 and a standard deviation of 1.01. The mean is above 3 (the mid-point of the 1 – 5 scale) and indicated that on average families are satisfied with the church.

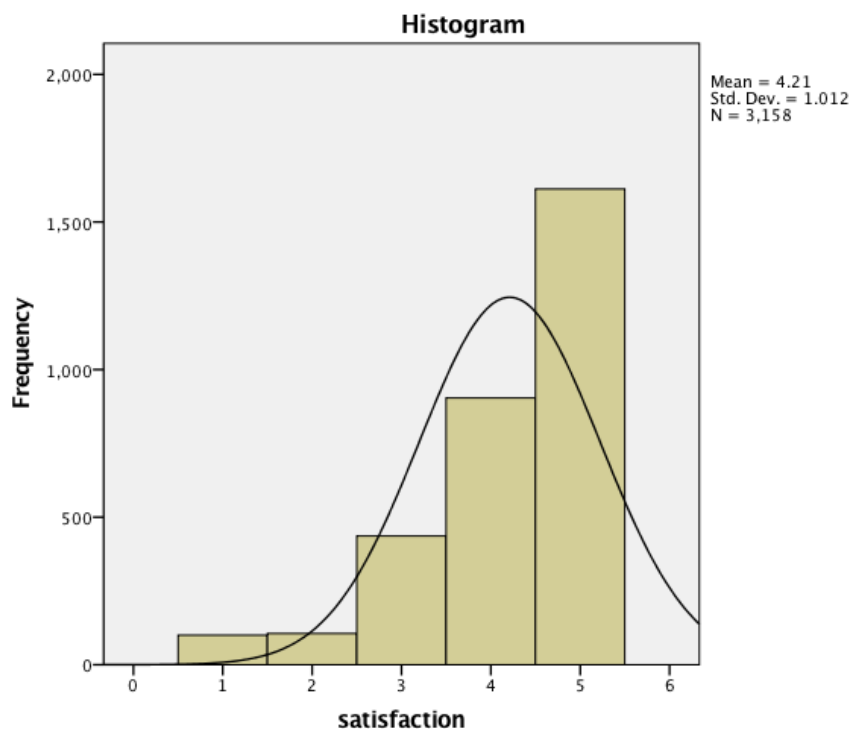


Figure 43 Satisfaction with Church

34. Lifelong Commitment

Participants were asked about their lifelong commitment to the church. This single item was found to have a mean of 4.84 and a standard deviation of 0.55. The mean is above 3 (the mid-point of the 1 – 5 scale) and indicated that on average people have a high level of commitment to the church.

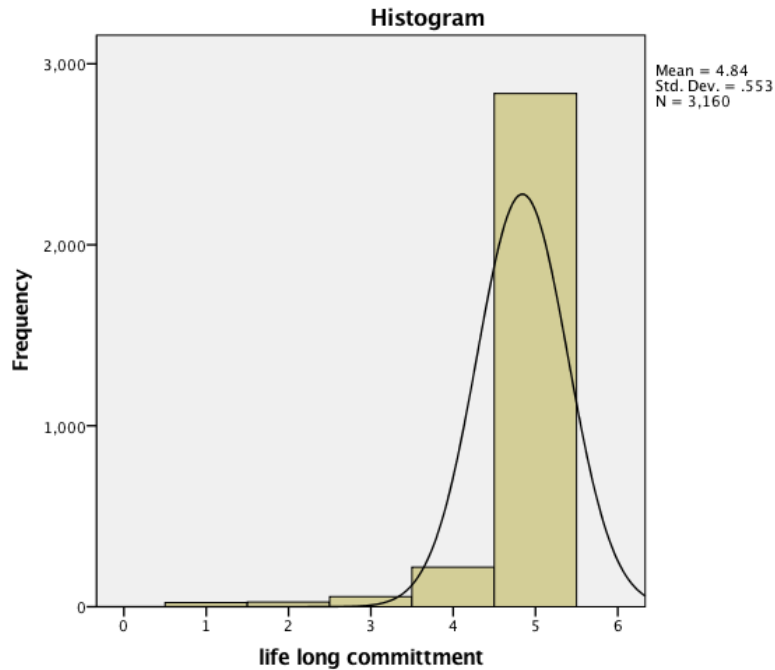


Figure 44 Commitment to the Church

35. Commitment to Others Scale

Participants were asked about their commitment to others. A confirmatory factor analysis was conducted on the Nurture items. All items loaded satisfactorily as demonstrated in the below table and were include in the Nurture Scale. The Cronbach's Alpha reliability for the 9-item scale was acceptable at 0.77.

Item	Factor Loading
a35.1 I help others with their religious questions and struggles.	.669
a35.2 I feel a deep sense of responsibility for reducing pain and suffering in the world.	.636
a35.3 I give a significant amount of time to help other people.	.746
a35.4 I give a significant amount of money to help other people.	.665
a35.5 I show that I care a great deal about reducing poverty in society.	.739
a35.6 I apply my faith to political and social issues.	.599
a35.7 I feel my life is felled with meaning and purpose.	.534

The Commitment to Others variable was constructed from the above items and was found to have a mean of 3.40 and a standard deviation of 0.81. The mean is above 3 (the mid-point of the 1 – 5 scale) and indicated that on average survey participants are committed to others.

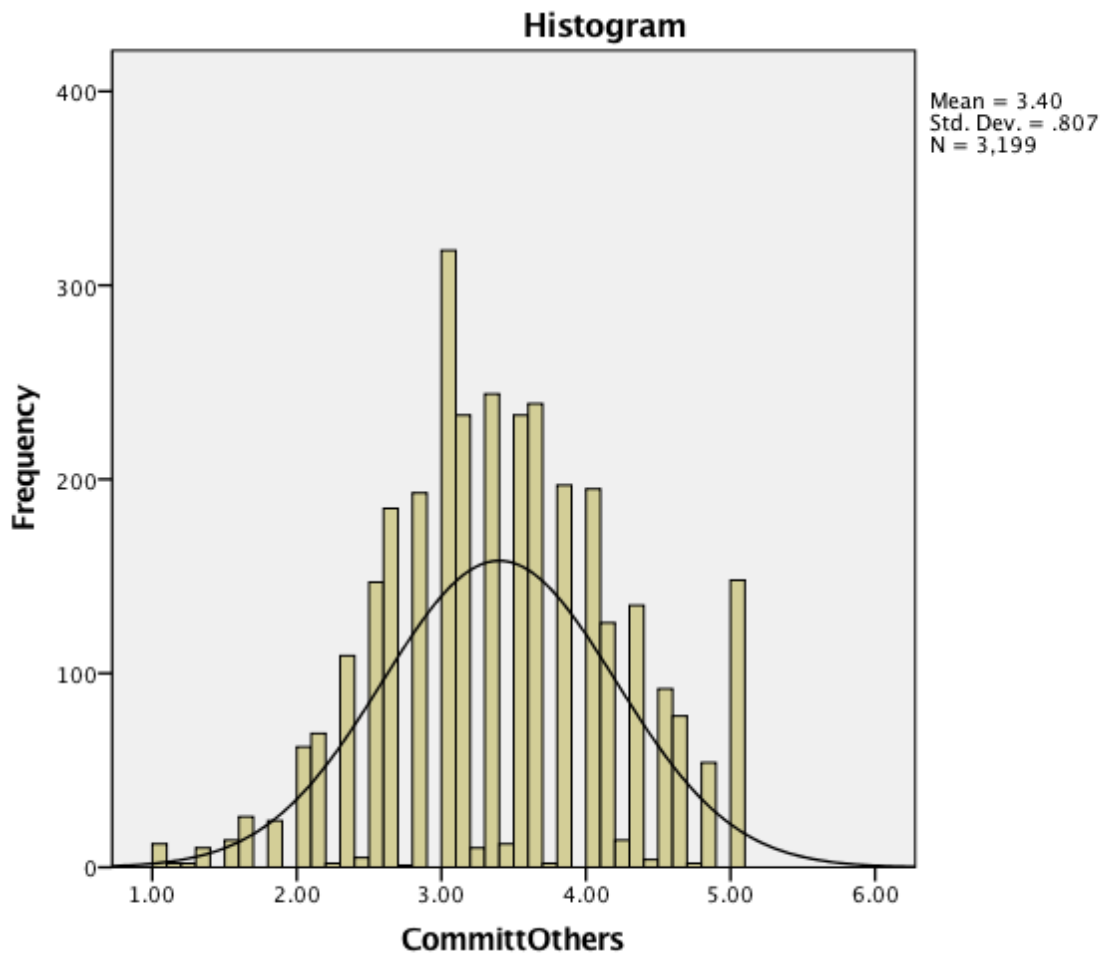


Figure 45 Commitment to Others

Below are the means for the items that contributed to the Commitment to Others scale.

Table 16 Commitment to Others Items

Item	Mean	St Dev
a35.1 I help others with their religious questions and struggles.	3.44	1.13
a35.2 I feel a deep sense of responsibility for reducing pain and suffering in the world.	3.71	1.17
a35.3 I give a significant amount of time to help other people.	3.56	1.04
a35.4 I give a significant amount of money to help other people.	3.30	1.10
a35.5 I show that I care a great deal about reducing poverty in society.	3.11	1.36
a35.6 I apply my faith to political and social issues.	4.31	0.91
a35.7 I feel my life is filled with meaning and purpose.		

Item a35.7 is single item that measures well-being. A mean of 4.31 (St Dev = 0.91) indicates that participants have high levels of wellbeing.

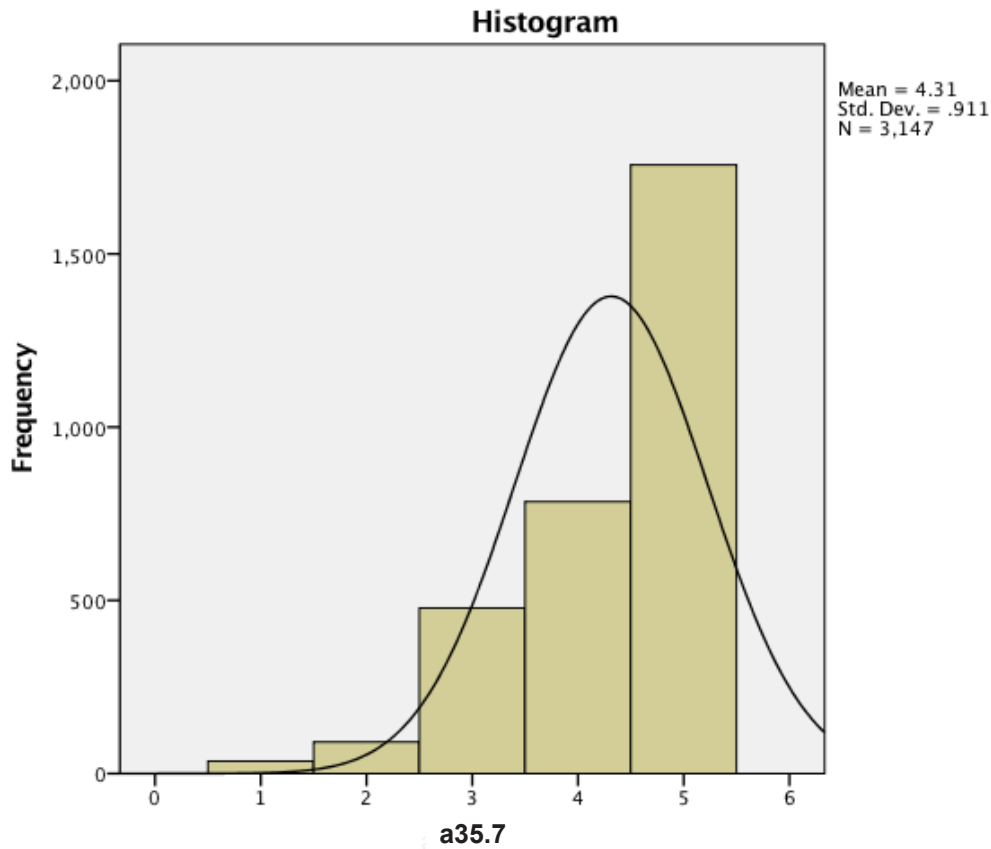


Figure 46 Wellbeing

36. Sabbath-Keeping Internalization

Sabbath-keeping is part of the Seventh-day Adventist church life. Participants were asked about their Sabbath experience. A confirmatory factor analysis was conducted on the Sabbath-keeping items. Four of the items loaded satisfactorily as demonstrated in the below table and were include in the Sabbath-keeping scale. The Cronbach's Alpha reliability for the 4-item scale was 0.72.

Table 17 Sabbath-Keeping Factor Loadings

Item		Factor Loading
a36.1	When I keep the Sabbath faithfully, I cope better with the stresses of the week.	.715
a36.2	Keeping the Sabbath is part of who I am, not something that I do because I have to.	.767
a36.4	Keeping the Sabbath helps me understand what is important to me.	.761
a36.5	I apply what I learn on Sabbath to how I live the rest of the week.	.714

The Sabbath-Keeping variable was constructed from the above items and was found to have a mean of 4.42 and a standard deviation of 0.60. The mean is above 3 (the mid-point of the 1 – 5 scale) and indicated that on average survey participants enjoyed very good Sabbath-Keeping experiences.

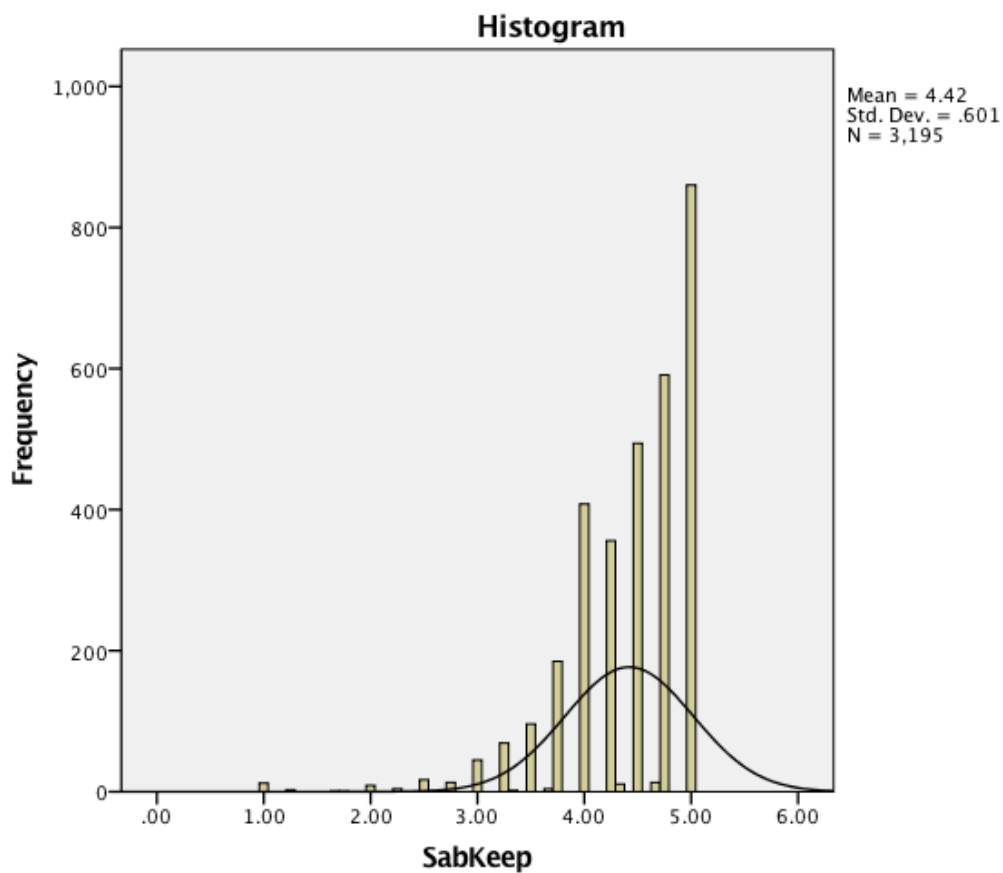


Figure 47 Sabbath-Keeping

Below are the means for the items that contributed to the Sabbath-Keeping scale.

Table 18 Sabbath-Keeping Items

a36.1	When I keep the Sabbath faithfully, I cope better with the stresses of the week.	4.41	0.84
a36.2	Keeping the Sabbath is part of who I am, not something that I do because I have to.	4.49	0.81
a36.3	If I didn't keep the Sabbath, I would get a lot more done.	3.50	1.44
a36.4	Keeping the Sabbath helps me understand what is important to me.	4.60	0.69
a36.5	I apply what I learn on Sabbath to how I live the rest of the week.	4.19	0.86
a36.6	I find it stressful to be forced to take a break on Sabbath from what I need to get done.	3.60	1.47

SECTION 5: WELL-BEING

The survey asks participants to consider aspects of their well-being to facilitate a greater understanding of the way that church members' religious lives contribute to their sense of overall well-being and spiritual well-being.

37. Happiness

Church members reported their level of happiness using a single item. The responses returned a mean of 3.34 (St Dev = 0.73) indicating that on average members enjoy positive levels of happiness.

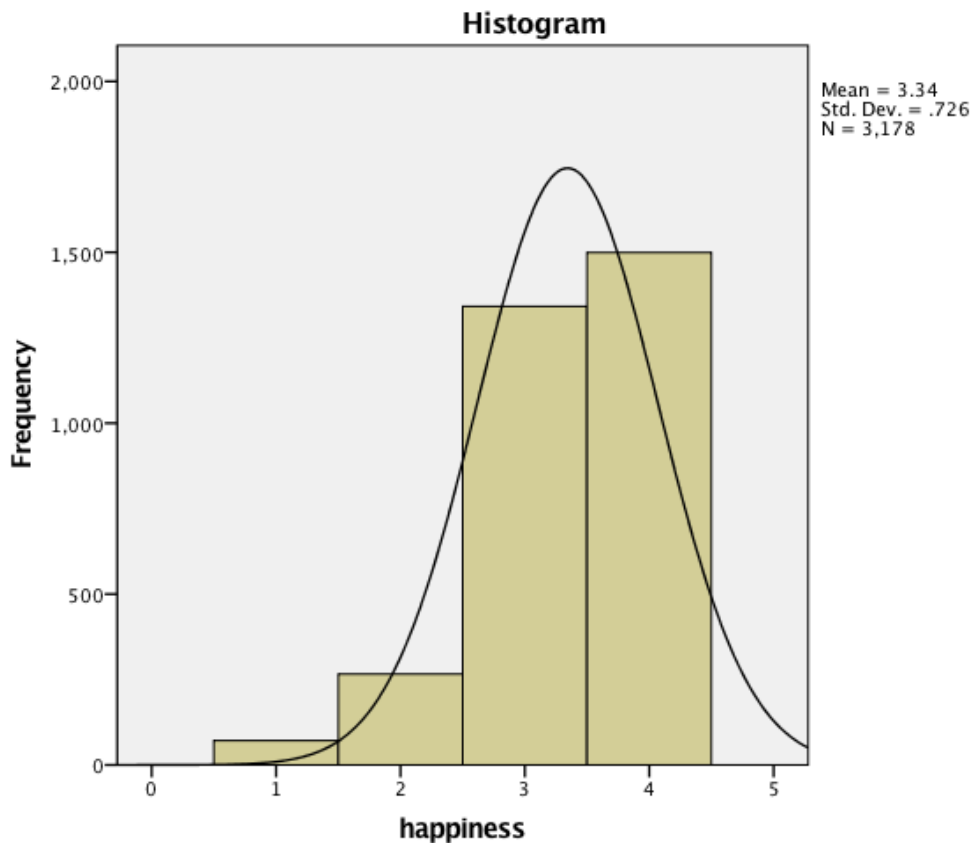


Figure 48 Happiness

38. Well-Being

Church members were asked to rate their life on a scale that spans the worst possible life through to the best possible life on a scale from 0 to 10. The result was an average response of 7.47 (St Dev = 2.29) indicating that participants enjoy a good quality of life.

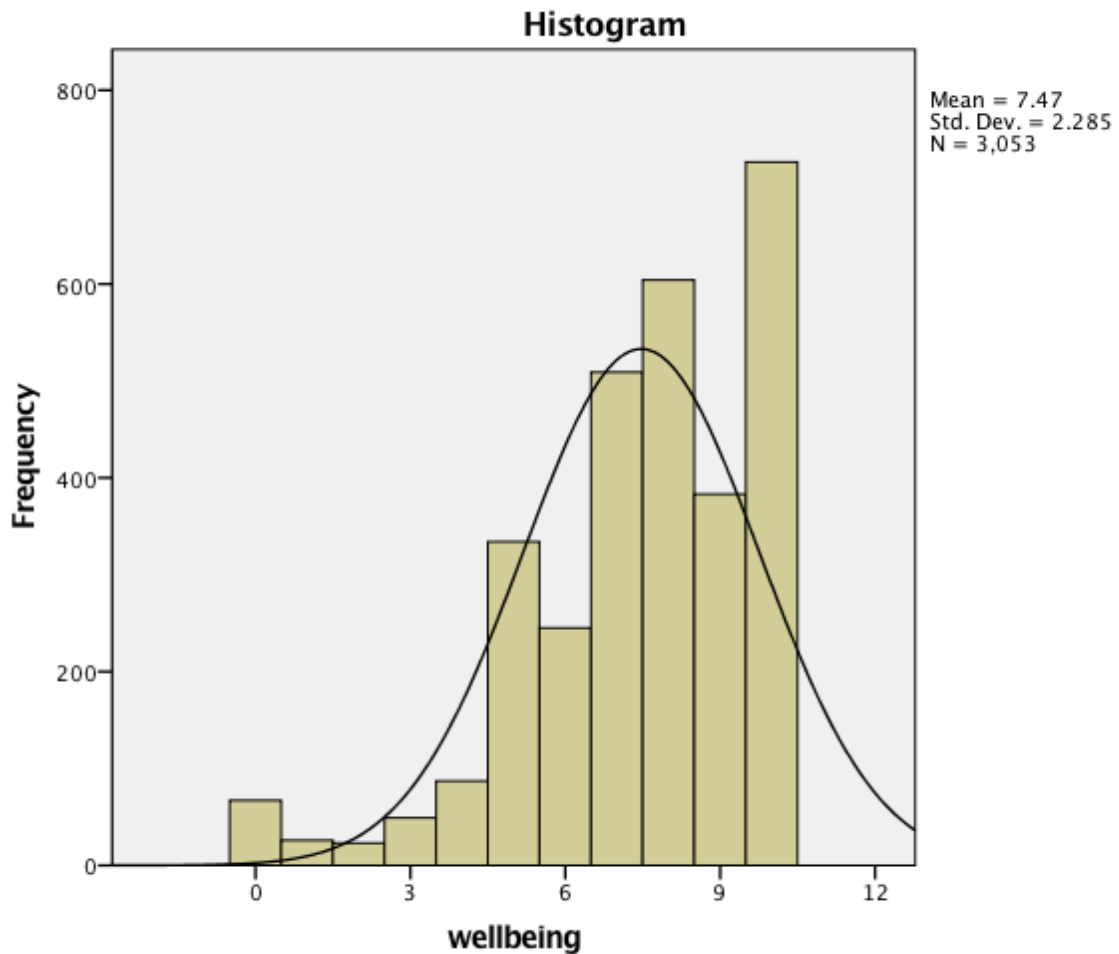


Figure 49 Wellbeing - Quality of Life

39. Spiritual Well-Being

Church members were asked to respond to items to indicate their levels of well-being that relate to specific religious and spiritual issues. A confirmatory factor analysis was conducted on the Spiritual Well-being items. Five of the items loaded satisfactorily as demonstrated in the below table and were include in the Spiritual Well-being Scale. The Cronbach's Alpha reliability for the 5-item scale was 0.74.

Table 19 Religious and Spiritual Wellbeing Factor Loadings

Item		Factor Loading
a39.1	I have grown spiritually.	.788
a39.2	Because of spiritual changes I've been through I've changed my priorities.	.814
a39.3	I more often have a sense of gratitude.	.775
a39.4	I spend more time thinking about spiritual questions.	.746
a39.8	I try to avoid anger and bitterness in my heart	.379

The Spiritual Well-being variable was constructed from the above items and was found to have a mean of 3.90 and a standard deviation of 0.76. The mean is above 3 (the mid-point of the 1 – 5 scale) and indicated that on average survey participants enjoyed positive spiritual well-being.

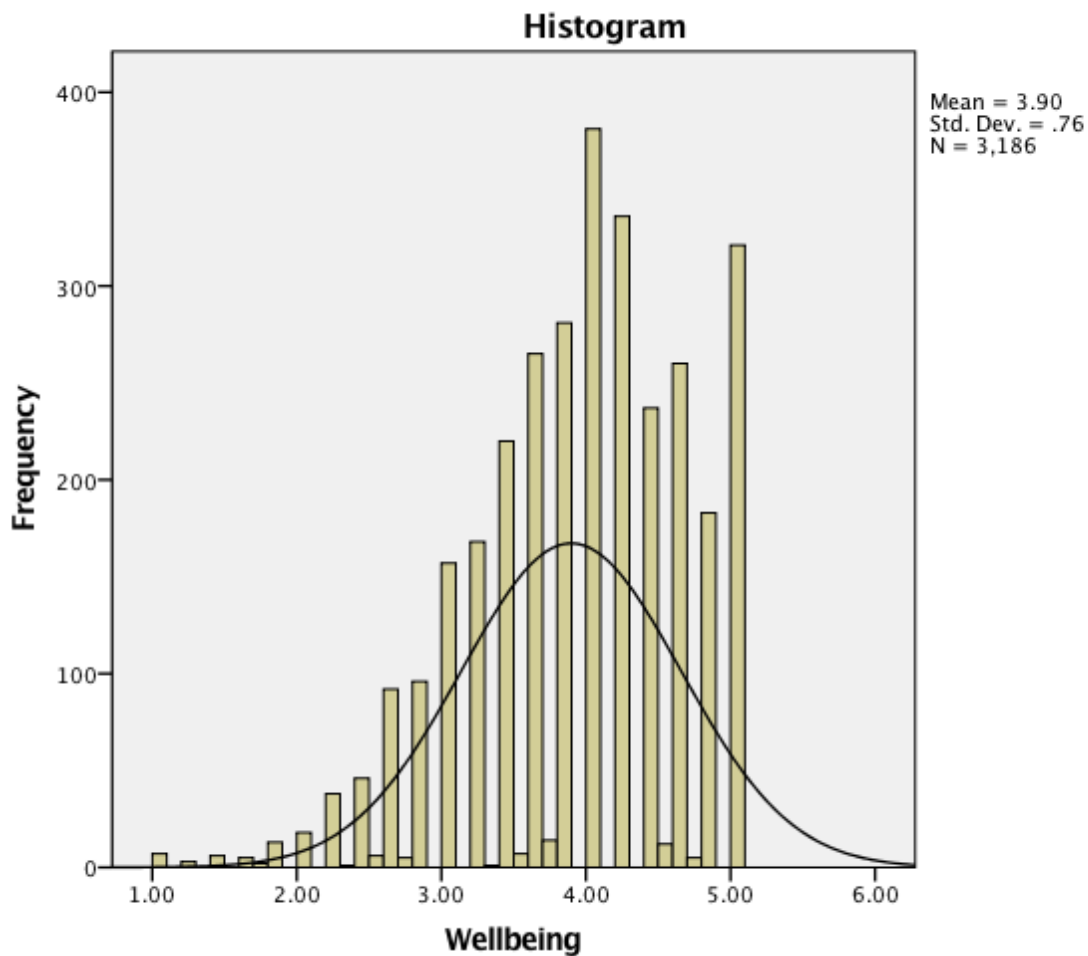


Figure 50 Spiritual Well-being

Below are the means for the items that contributed to the Spiritual Well-being scale

Item	Mean	St Dev
39.1. I have grown spiritually.	3.85	1.076
39.2. Because of spiritual changes I've been through I've changed my priorities.	3.83	1.101
39.3. I more often have a sense of gratitude.	4.13	0.946
39.4. I spend more time thinking about spiritual questions.	3.76	1.075
39.5. In some ways I think I am spiritually lost.	2.59	1.427
39.6. My faith has been shaken and I am not sure what I believe.	1.97	1.272
39.7. I feel I've lost some important spiritual meaning that I had before.	2.46	1.430
39.8. I try to avoid anger and bitterness in my heart.	3.92	1.129

SECTION 6: BELIEFS

40. Fundamental Beliefs

Participants we asked about various Seventh-day Adventist and other religious beliefs. A confirmatory factor analysis was conducted on the Fundamental Beliefs items. Twenty-seven of the items loaded satisfactorily as demonstrated in the below table and were included in the Fundamental Beliefs Scale. The Cronbach's Alpha reliability for the 27-item scale was 0.87.

Table 20 Fundamental Belief Items Factor Loadings

Item		Factor Loading
a40.1	The Seventh-day Adventist Fundamental Beliefs are the teaching of Holy Scripture.	.689
a40.2	I believe in a personal God who seeks a relationship with human beings.	.498
a40.3	The soul is a separate, spiritual part of a person and lives on after death.	.091
a40.4	Salvation is through Jesus Christ alone.	.573
a40.5	I believe God created the world in six days of 24 hours each in the relatively recent past.	.547
a40.6	The Seventh-day Adventist Church is God's true last-day church with a message to prepare the world for the Second Coming of Christ.	.709
a40.7	I will not get to heaven unless I obey God's law perfectly.	.322
a40.8	The most effective method for reaching people for Christ is to mingle with them, meet their needs, win their confidence, and then bid them to follow Christ.	.565
a40.9	Fulfillment of prophecy and events in the world indicate that Christ's coming is very near.	.736
a40.11	When people die, their bodily remains decay and they have no consciousness or activity until they are resurrected.	.375
a40.12	God wants me to take care of my body by avoiding alcohol, drugs, and tobacco.	.584
a40.13	The head of the Church is Christ.	.657
a40.14	The true Sabbath is the seventh day (Saturday).	.705
a40.15	Ellen White's writings are the result of the spiritual gift of prophecy.	.683
a40.16	I am saved the moment I believe and accept what Jesus has done for me.	.453
a40.17	I believe God created the universe.	.661
a40.19	All believers are called by God to serve each other without distinction of race, culture, education, nationality, gender, or wealth.	.389
a40.20	If I am to be saved, I need to be baptized into the Seventh-day Adventist church.	.414
a40.21	I am confident that Jesus Christ will return in my life time.	.476
a40.22	Prayer in the name of Jesus is the only way to defeat evil powers and demonic spirits.	.598
a40.25	My body is the temple of the Holy Spirit.	.566
a40.26	Church unity means uniformity in more than doctrinal belief.	.395
a40.28	The sanctuary doctrine is vital to Adventist theology.	.591

a40.29	In order to reach people for Christ, we need to get to know them and their needs before we preach the Gospel to them.	.465
a40.30	The Seventh-day Adventist Fundamental Beliefs as a whole reflect the loving and gracious character of God.	.717
a40.31	The Bible teaches that sexual intercourse should be exclusively reserved for marriage.	.470
a40.32	The Bible teaches that marriage is a union between a man and a woman.	.625

The Fundamental Beliefs variable was constructed from the above items and was found to have a mean of 4.47 and a standard deviation of 0.45. The mean is above 3 (the mid-point of the 1 – 5 scale) and indicated that on average survey participants agree to strongly agree with the church’s fundamental beliefs.

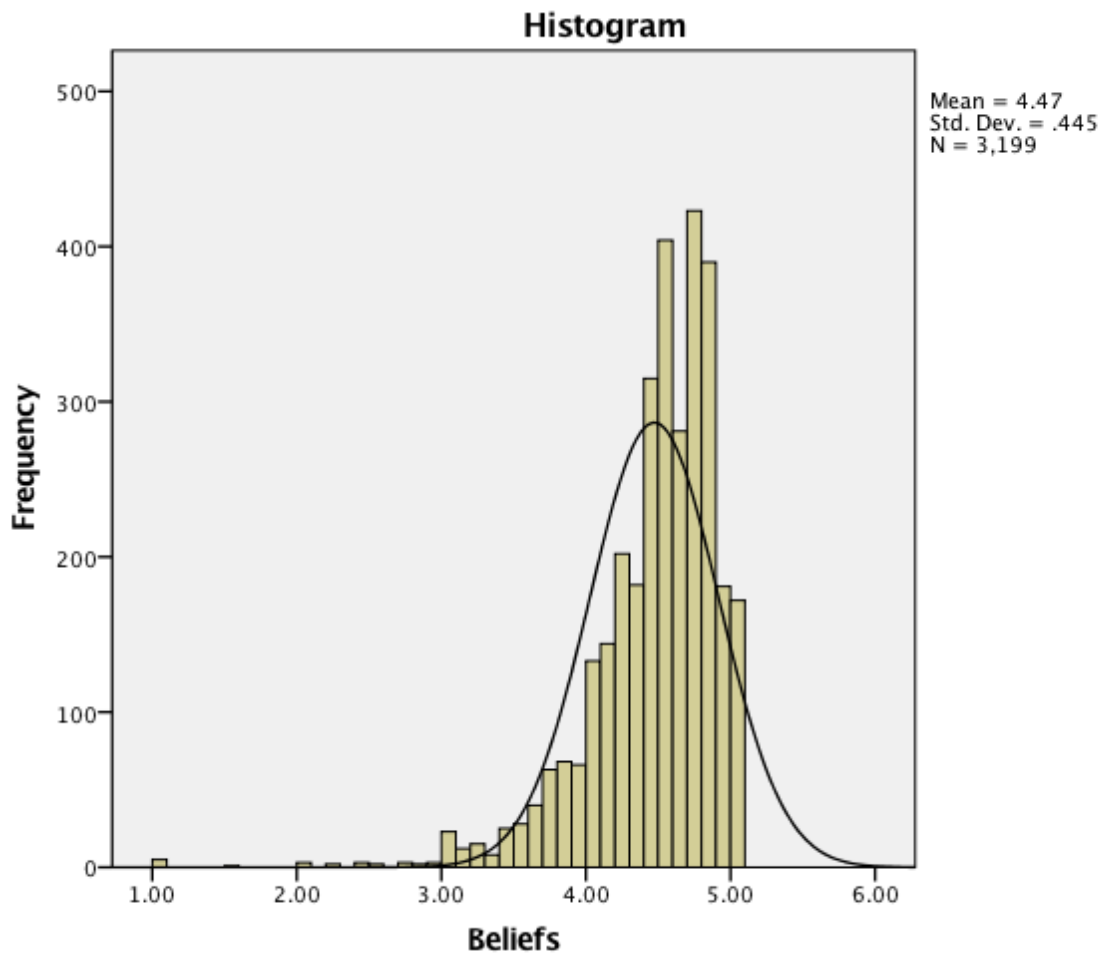


Figure 51 Fundamental Beliefs

Following are the means for the items that contributed to the Fundamental Beliefs scale.

Table 21 Fundamental Beliefs

Item		Mean	St Dev
a40.1	The Seventh-day Adventist Fundamental Beliefs are the teaching of Holy Scripture.	4.6	0.75
a40.2	I believe in a personal God who seeks a relationship with human beings.	4.73	0.58
a40.3	The soul is a separate, spiritual part of a person and lives on after death.	2.95	1.60
a40.4	Salvation is through Jesus Christ alone.	4.83	0.50
a40.5	I believe God created the world in six days of 24 hours each in the relatively recent past.	4.53	0.88
a40.6	The Seventh-day Adventist Church is God's true last-day church with a message to prepare the world for the Second Coming of Christ.	4.68	0.78
a40.7	I will not get to heaven unless I obey God's law perfectly.	3.57	1.58
a40.8	The most effective method for reaching people for Christ is to mingle with them, meet their needs, win their confidence, and then bid them to follow Christ.	4.6	0.74
a40.9	Fulfillment of prophecy and events in the world indicate that Christ's coming is very near.	4.71	0.65
a40.10	Christians may go to witch doctors or spiritual healers for protection or healing.	1.75	1.30
a40.11	When people die, their bodily remains decay and they have no consciousness or activity until they are resurrected.	4.59	0.85
a40.12	God wants me to take care of my body by avoiding alcohol, drugs, and tobacco.	4.77	0.62
a40.13	The head of the Church is Christ.	4.86	0.46
a40.14	The true Sabbath is the seventh day (Saturday).	4.88	0.44
a40.15	Ellen White's writings are the result of the spiritual gift of prophecy.	4.63	0.70
a40.16	I am saved the moment I believe and accept what Jesus has done for me.	4.65	0.70
a40.17	I believe God created the universe.	4.88	0.42
a40.18	People who have died believing in Christ are in heaven right now.	1.84	1.29
a40.19	All believers are called by God to serve each other without distinction of race, culture, education, nationality, gender, or wealth.	4.61	0.76
a40.20	If I am to be saved, I need to be baptized into the Seventh-day Adventist church.	3.75	1.44
a40.21	I am confident that Jesus Christ will return in my life time.	4.13	0.98
a40.22	Prayer in the name of Jesus is the only way to defeat evil powers and demonic spirits.	4.71	0.65
a40.23	The dead have powers to communicate with and influence the living.	1.76	1.26
a40.24	Every person is born with tendencies toward evil.	3.28	1.49
a40.25	My body is the temple of the Holy Spirit.	4.75	0.61
a40.26	Church unity means uniformity in more than doctrinal belief.	4.03	1.11
a40.27	Different regions of the world should be allowed to set their own policies in order to meet differing needs.	3.29	1.25
a40.28	The sanctuary doctrine is vital to Adventist theology.	4.26	0.93

a40.29	In order to reach people for Christ, we need to get to know them and their needs before we preach the Gospel to them.	4.5	0.76
a40.30	The Seventh-day Adventist Fundamental Beliefs as a whole reflect the loving and gracious character of God.	4.6	0.69
a40.31	The Bible teaches that sexual intercourse should be exclusively reserved for marriage.	4.46	0.85
a40.32	The Bible teaches that marriage is a union between a man and a woman.	4.7	0.63

41. Authority—Bible

Participants were asked about their acceptance of the authority of the Bible. This was measured using a single item which returned a mean of 5.19 (St Dev = 1.27).

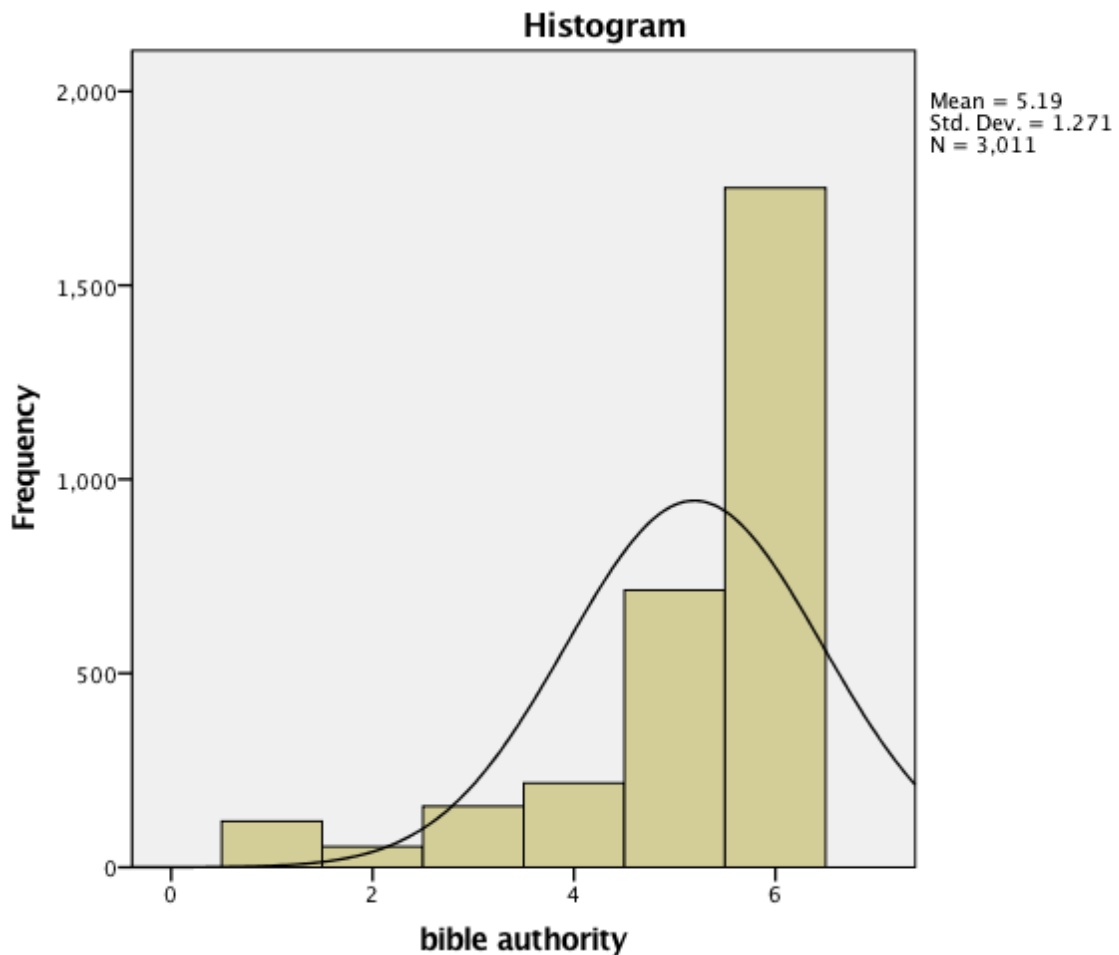


Figure 52 Authority of the Bible

42. Authority—Spirit of Prophecy

Participants were asked about their understanding of the writings of Ellen G. White. This was measured using a single item which returned a mean of 4.04 (St Dev = 0.81).

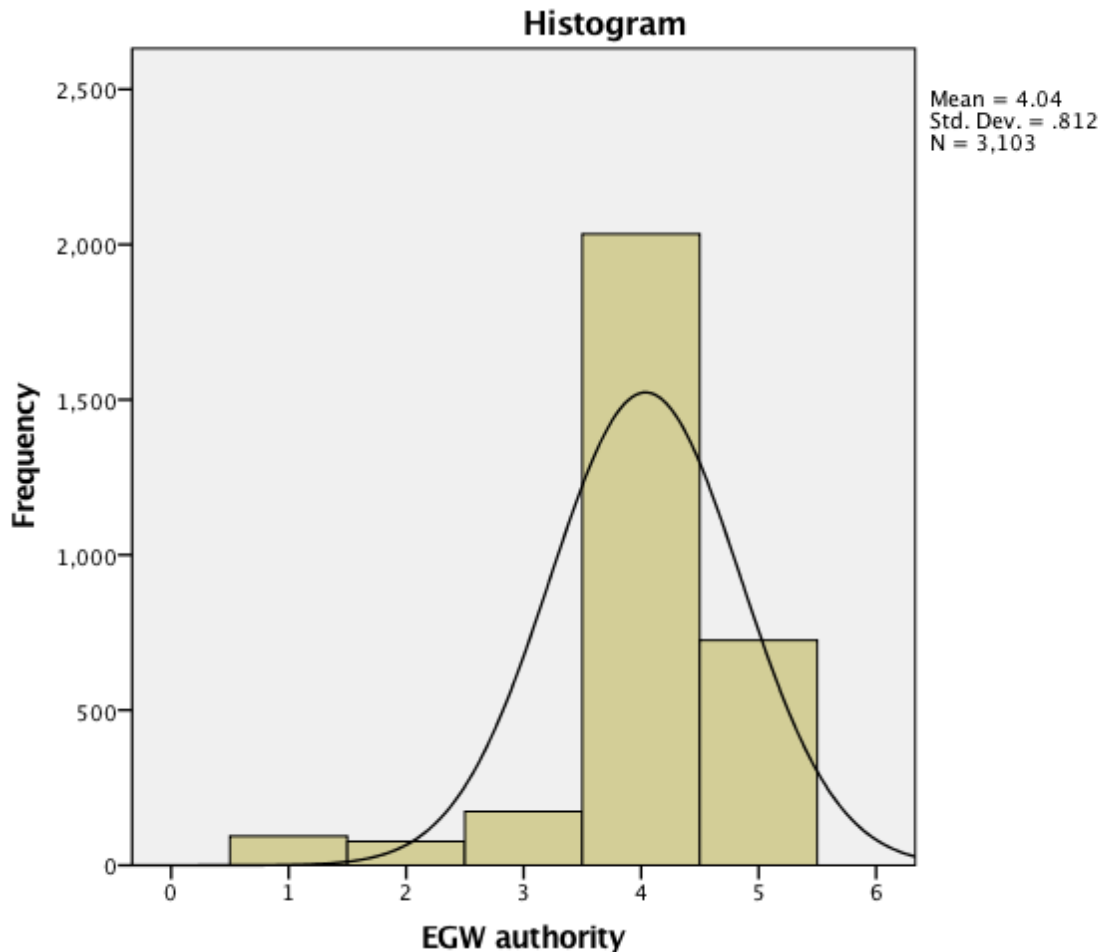


Figure 53 Authority of the Spirit of Prophecy

43. Belief Acceptance

Church members were asked to respond to items to indicate their levels of belief and acceptance of individual teachings of the Seventh-day Adventist Church. A confirmatory factor analysis was conducted on the Belief Acceptance items. All of the items loaded satisfactorily as demonstrated in the below table and were include in the Belief Acceptance Scale. The Cronbach's Alpha reliability for the 9-item scale was very good at 0.84.

Item		Factor Loading
a43.1	There is one God: Father, Son, and Holy Spirit, a unity of three eternal equal Persons.	.603
a43.2	The investigative pre-Advent judgment began in 1844.	.715

a43.3	Christ is acting as our advocate before God in the heavenly sanctuary right now.	.744
a43.4	Before Christ returns, God will decide who is to be saved and who will be eternally lost.	.476
a43.5	The Church's interpretation of end-time prophecies.	.668
a43.6	Ellen G. White was a prophet.	.655
a43.7	Adventists should abstain from alcohol, tobacco, and the irresponsible use of drugs.	.689
a43.8	Adventists should eat a healthful diet and abstain from unclean foods identified in Scripture.	.761
a43.9	Adventists should avoid amusements and entertainments that are not in harmony with the Spirit of Christ.	.703

The Belief Acceptance variable was constructed from the above items and was found to have a mean of 4.42 and a standard deviation of 0.63. The mean is above 3 (the mid-point of the 1 – 5 scale) and indicated that on average survey participants agree to embrace wholeheartedly the church's individual beliefs.

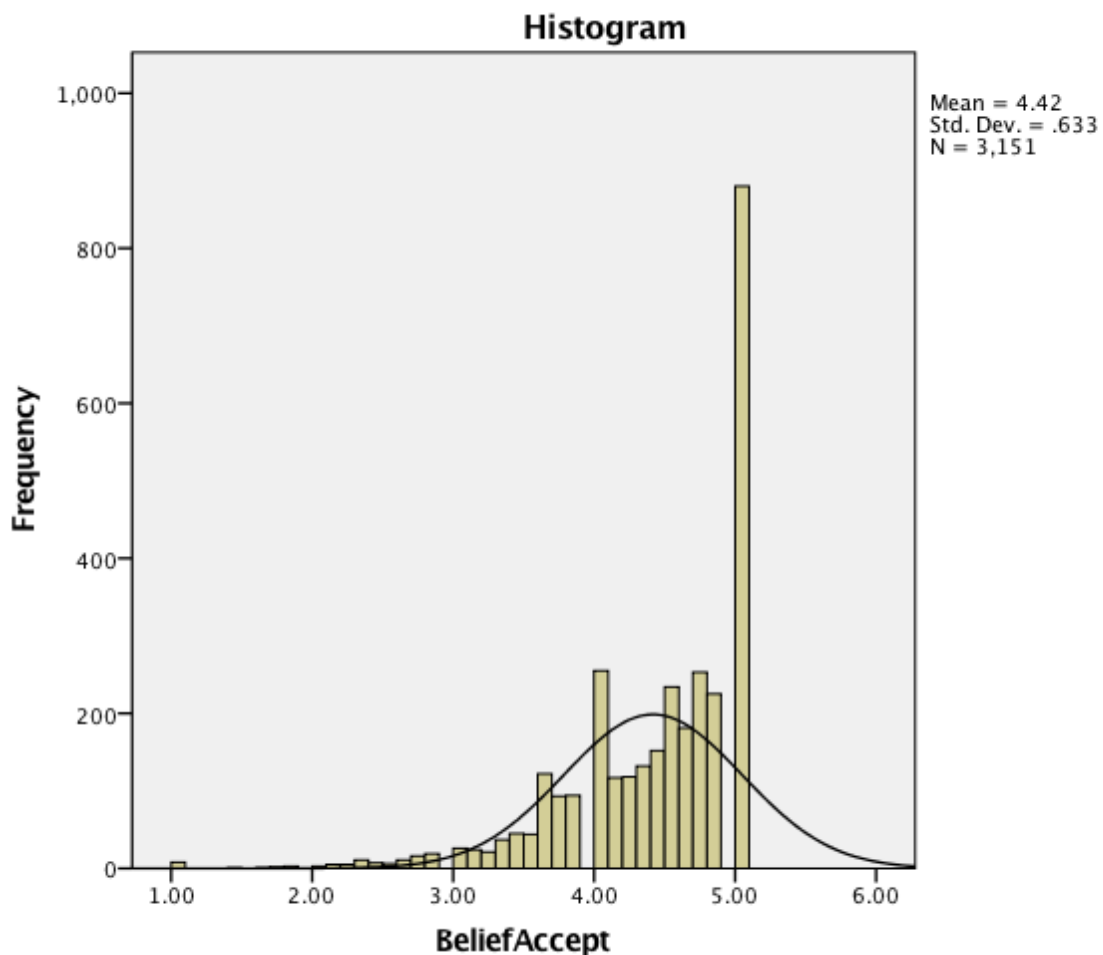


Figure 54 Belief Acceptance

Following are the means for the items that contributed to the Belief Acceptance scale

Item	Mean	St Dev
a43.1 There is one God: Father, Son, and Holy Spirit, a unity of three eternal equal Persons.	4.66	0.675
a43.2 The investigative pre-Advent judgment began in 1844.	4.11	1.11
a43.3 Christ is acting as our advocate before God in the heavenly sanctuary right now.	4.59	0.776
a43.4 Before Christ returns, God will decide who is to be saved and who will be eternally lost.	4.25	1.089
a43.5 The Church's interpretation of end-time prophecies.	4.36	0.878
a43.6 Ellen G. White was a prophet.	4.34	1
a43.7 Adventists should abstain from alcohol, tobacco, and the irresponsible use of drugs.	4.47	1.054
a43.8 Adventists should eat a healthful diet and abstain from unclean foods identified in Scripture.	4.59	0.795
a43.9 Adventists should avoid amusements and entertainments that are not in harmony with the Spirit of Christ.	4.49	0.905

SECTION 7: HEALTH

In this final section, church members were asked about their health and beliefs about their health.

44. Diet

Firstly, members were asked to indicate which diet they follow. Results are shown in the figure below.

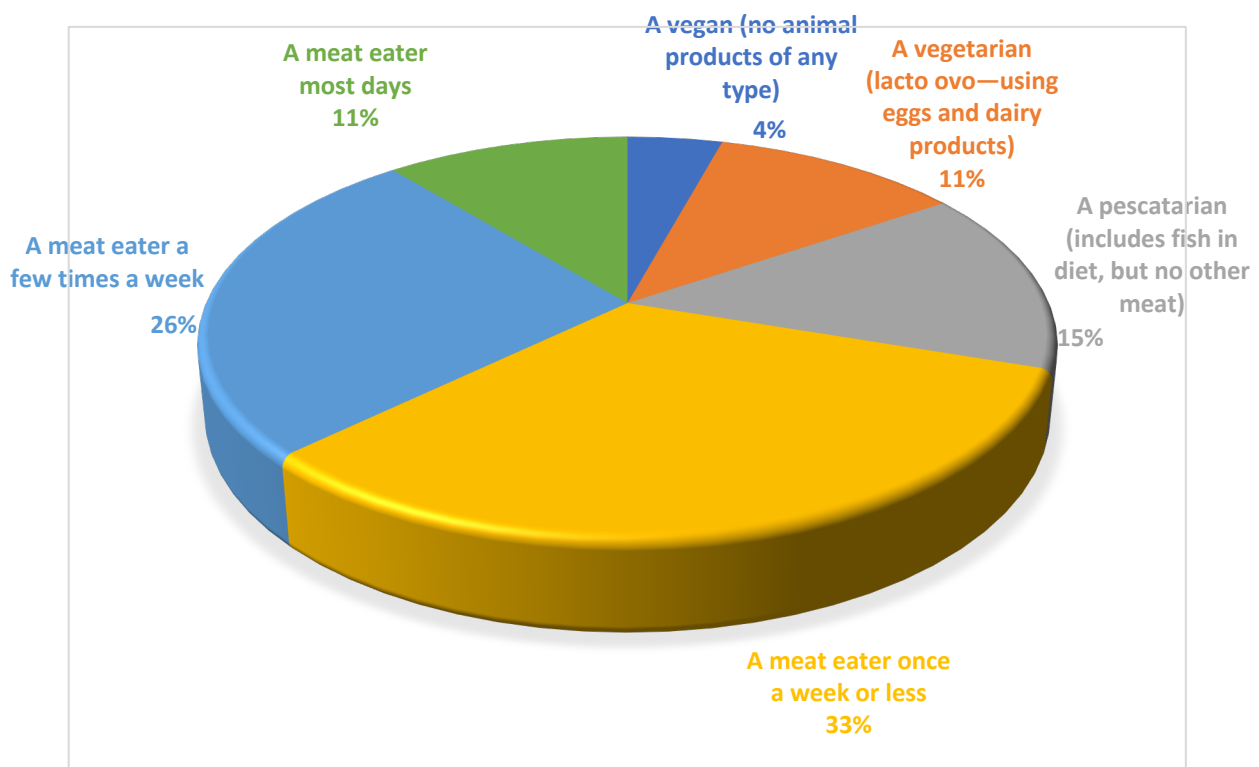


Figure 55 Diet

45. Alcohol Use

Compared to alcohol use in society, church members reported a low level of use and an even lower level of tobacco use.

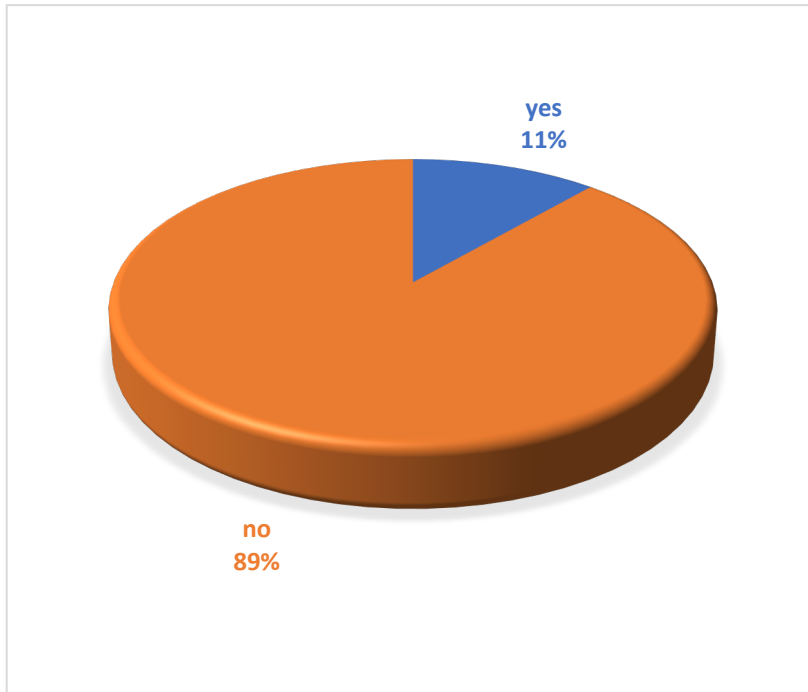


Figure 56 Alcohol Use

46. Tobacco Use

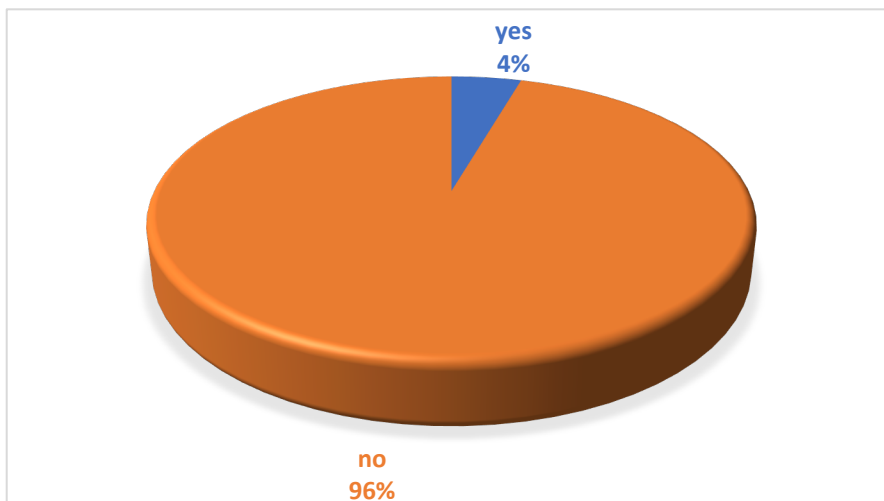


Figure 57 Tobacco Use

47. Alcohol Research Belief

Nearly 70% of church members reported that they felt that there was no safe level of alcohol use.

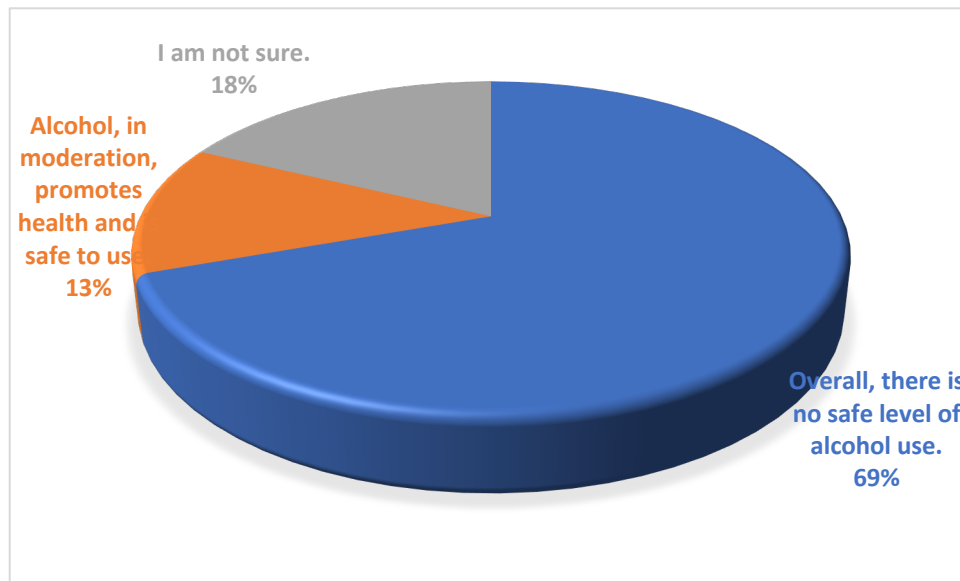


Figure 58 Beliefs About Alcohol

48. Commitment to Health

Nearly two thirds of members indicated that they follow the health message a moderate amount or a great deal.

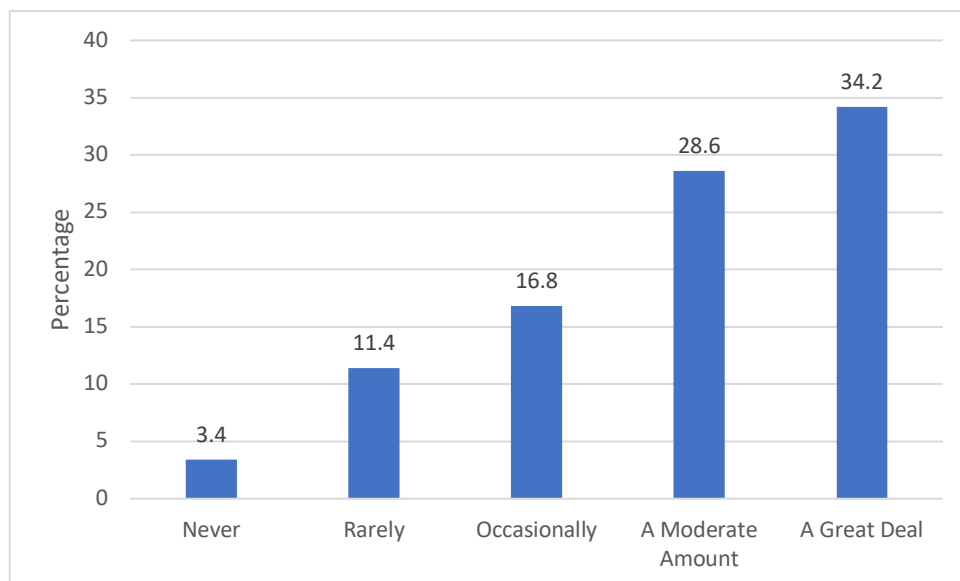


Figure 59 Follow the Health Message

49. Health Message Beliefs

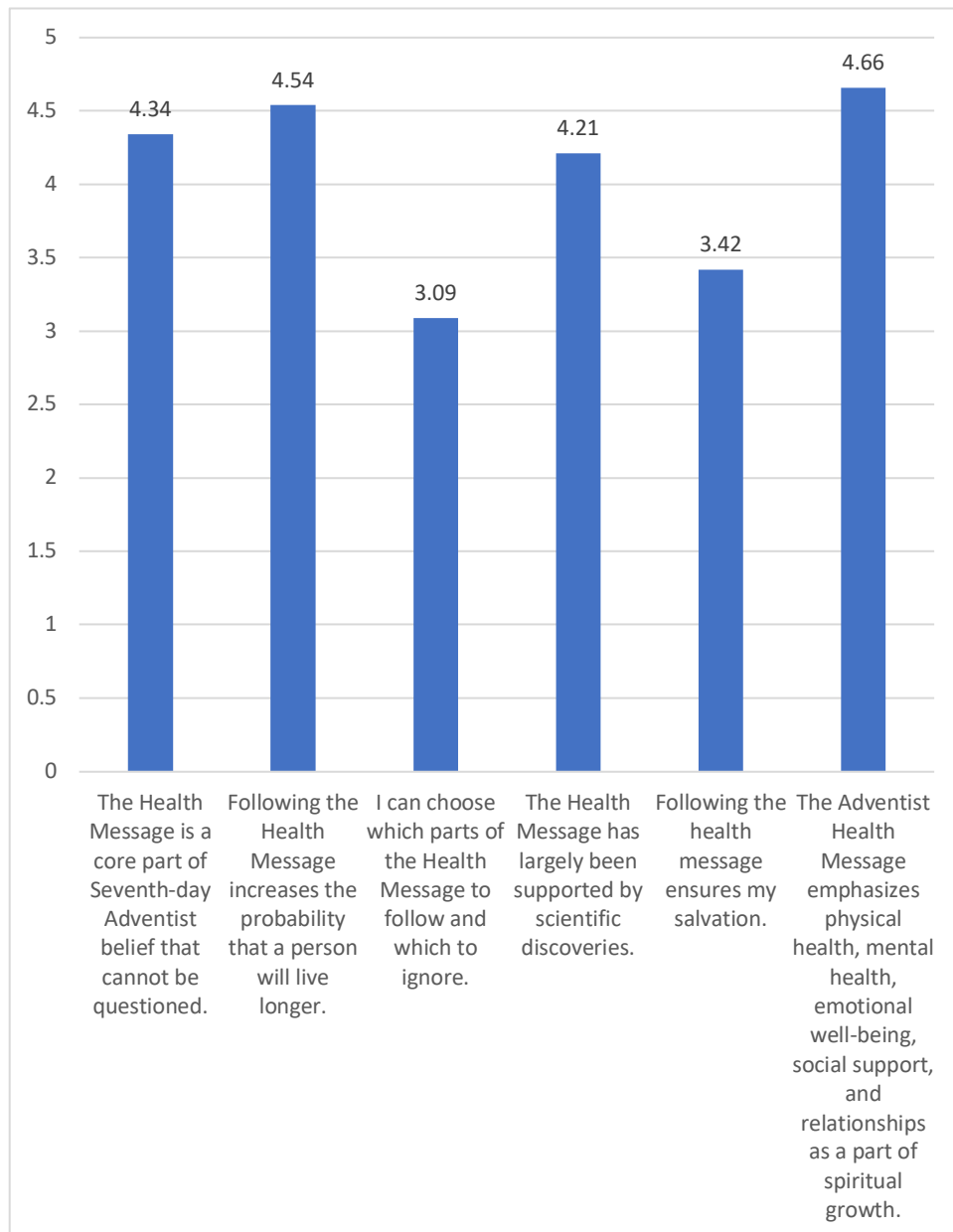


Figure 60 Health Message Beliefs

Participants provided an average response of 4.04 across the six items indicating that on average they agree with the Adventist Health message.

Table 22 Health Message Beliefs

Item	Mean	St Dev
49.1. The Health Message is a core part of Seventh-day Adventist belief that cannot be questioned.	4.34	0.915
49.2. Following the Health Message increases the probability that a person will live longer.	4.54	0.703
49.3. I can choose which parts of the Health Message to follow and which to ignore.	3.09	1.388
49.4. The Health Message has largely been supported by scientific discoveries.	4.21	0.89
49.5. Following the health message ensures my salvation.	3.42	1.486
49.6. The Adventist Health Message emphasizes physical health (e.g. diet, exercise), mental health, emotional well-being, social support, and relationships as a part of spiritual growth.	4.66	0.616