

EUD Ministerial Association Report

**Summit on Nurture and Retention, 2013:
Disciplining, Retaining, and Reclaiming**

November 18-20, 2013
General Conference Headquarters
Silver Spring, MD

EUD Approach to Mission: Actual Situation

- ◆ Too many programs from various departments that overlap, confuse and divide the energies and resources of the Church.
- ◆ Only a small number of church members have a meaningful devotional life and are involved in any kind of service or activities in behalf of the Church and the society.
- ◆ Many Church members are willing to serve, but don't know how and what to do.

EUD Approach to Mission: Actual Situation

- ◆ In most of the Churches there are not programs and structures to train members as actively involved disciples.
- ◆ Church activities and programs are not conceived in such a manner as to involve a great number of members. Some of these initiatives, rather reinforce their role of spectators and consumers.

EUD Approach to Mission

Brief explanation

- ◆ A true discipleship process starts with individuals being attracted and directed to God by other disciples who are actively involved in making new disciples for Christ.
- ◆ New disciples grow stronger in their relationship with God and the Church as they also become actively involved in making new disciples as well.

EUD Inter-Ministries Approach

Mission Statement

- ◆ The EUD Inter-Ministries Initiative exists to emphasize and promote a higher level of unity and synergy among Church members, institutions, departments and services in order to more efficiently utilize the human and material resources in fulfilling the mission of the SDA Church in the EUD Territory.

EUD Inter-Ministries Approach

Condensed Mission Statement

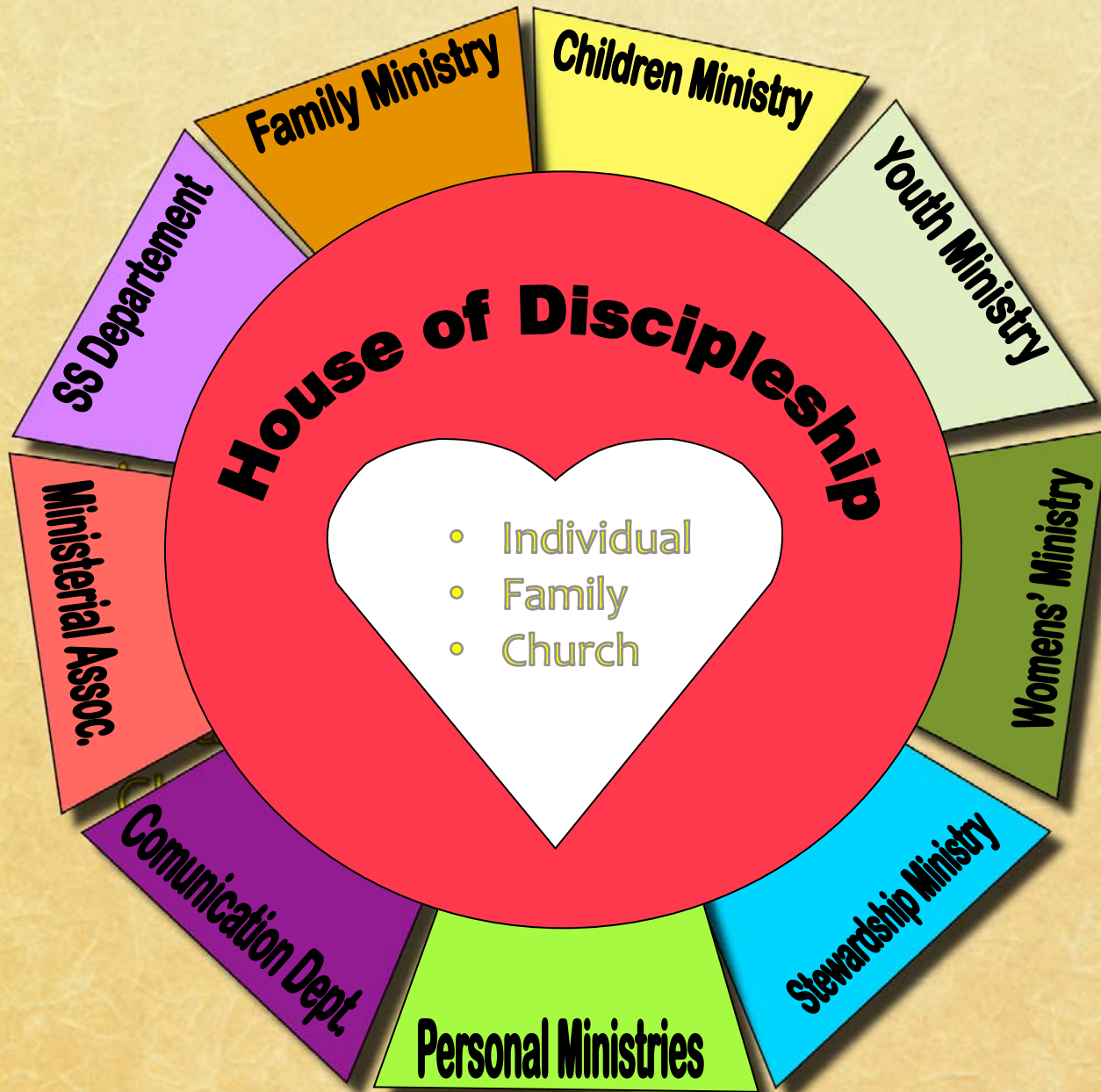
- ◆ Making disciples, together, makes us stronger.

The Unifying Concept

Discipleship

through the

Inter-Ministries Approach



Inter-Ministries Approach

Main Objectives

1. To provide general guidelines for a united ministry to be implemented in the EUD territory at all the church levels.
2. To create awareness and the right motivation for all church members, as Christ's disciples, to be involved in the ministry entrusted to us individually and collectively.
3. To encourage and sustain the unions, conferences and local churches as they adopt this approach in their territories.

Inter-Ministries Approach

3 Basic Values for Discipleship

Relationship with God and Men

1. Reach Up (God)
2. Reach in (Family & Church)
3. Reach out (Society)

Raison d'être of the Church

- ♦ The church is God's appointed agency for the salvation of men. It was organized for service, and its mission is to carry the gospel to the world. From the beginning it has been God's plan that through His church shall be reflected to the world His fullness and His sufficiency. (Ephesians 3:10) – AA 9

Raison d'être of the Church

- ◆ The members of the church, those whom He has called out of darkness into His marvelous light, are to show forth His glory. The church is the repository of the riches of the grace of Christ; and through the church will eventually be made manifest, even to “the principalities and powers in heavenly places,” the final and full display of the love of God.

(Ephesians 3:10) – AA 9

Basic Presuppositions

- ◆ God expects that each and every church member be involved in the mission He has entrusted the Church.
- ◆ Church members must be trained, motivated and organised for the mission.
- ◆ Pastors and church leaders must assume more and more the role of coordinators, trainers and motivators of the Church members.

Basic Presuppositions

- ◆ Team work is critical to create synergies and avoid discouragement and lack of motivation of the ones who are involved in mission.
- ◆ The evangelistic work will not really succeed if the individuals involved in it do not maintain a close and permanent relationship with God through much prayer and the reading of His word.

Basic Presuppositions

- ◆ Church departments should work in harmony and cooperation.
- ◆ Instead of too many activities and plans, churches should establish a general plan of action that takes in account the resources of the church and the needs of the people they want to reach.
- ◆ The general plan of action should be established in such a manner as to integrate as many Church members as possible.

Basic Presuppositions

- ◆ Church members should be organized in teams, where they can pray, study the Bible, have fellowship and work together.
- ◆ Church departments should establish their program taking in account the general strategy and plans of the Church, not the other way around.

Basic Presuppositions

- ◆ Discipling, retaining and reclaiming new or former Church members is not to be seen as the responsibility of just one specific department, but as being the main objective of the whole Church.
- ◆ As Churches establish their plans of action, to each one of the departments should be given some specific tasks to be accomplished in the context of the of the general plan and mission of the Church.

Basic Presuppositions

- ◆ It is very difficult to train, support and motivate a great number of Church members if they are not integrated in a small group structure – SS Action Units, Home Small Groups, or other – where they can pray, study, have fellowship and work together with a common goal.
- ◆ At the EUD, first the Sabbath School Actions Units, then the Home Small Groups are the support structures that are yielding the best results in accomplishing this purpose.

Basic Presuppositions

- ◆ These Small Groups can be a powerful tool as support units for any kind of missionary activities.
- ◆ The churches where it is difficult to establish SS Action Units or Home Small Groups, church members can be involved and organized, with success, in small groups structures for other general programs or activities such Family Visitation, KIDs, iCOR, Health Expos, etc.



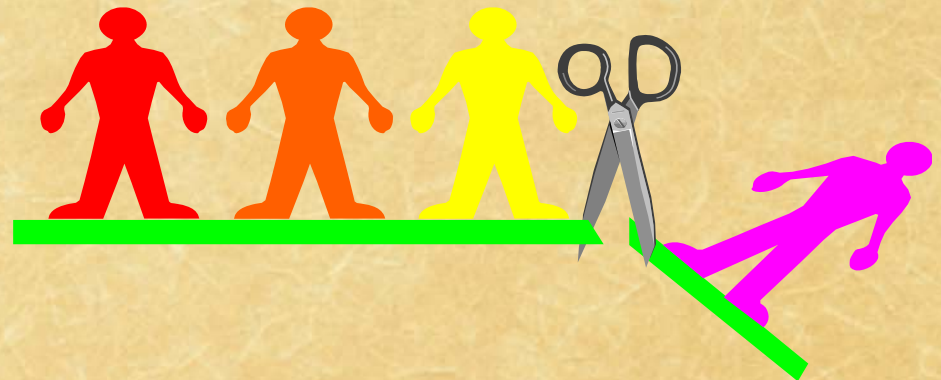
A Few Encouraging Examples

Bergamo

The Power of Prayer and
Small Groups Dynamics in Evangelization

A Dying Church

- ◆ About five years ago Bergamo's church was stagnant or even worse; in the process of a slow but steady death process.



A Dying Church

- ◆ At the beginning of the Sabbath School program there were, in average, about 15 individuals. Church attendance during the worship was about 80 members, maximum.



A Dying Church

- ◆ Very few baptisms:
 - ◆ In the year 2004 – 0
 - ◆ In the year 2005 – 6



A Dying Church

- ◆ Only 8 young people attended the pathfinder club.
- ◆ Only 10 children in the Sabbath School



Prayer and Visitation

- ◆ The first elder started praying for his congregation. He was convinced that something had to be done to reverse this trend.





Prayer and Visitation

- ◆ While interceding for his church he started visiting some of the most influential church members, trying to win them to his cause. It was not an easy task.



Prayer and Visitation

- ◆ He believed that through prayer, the study of the word, fellowship and the engagement of a growing number of church members a meaningful change would happen.







Various Groups, one Goal: Fellowship, Prayer and Work

- ◆ They started:
 - ◆ A weekly meeting for church elders (Tuesday)
 - ◆ A home group (Wednesday)
 - ◆ A fellowship meeting (Sabbath Evening)
 - ◆ Meetings for women
 - ◆ Special programs for young people

Sabbath School Action Units

- ◆ They established the Sabbath School Action Units – 10 Sabbath School classes.



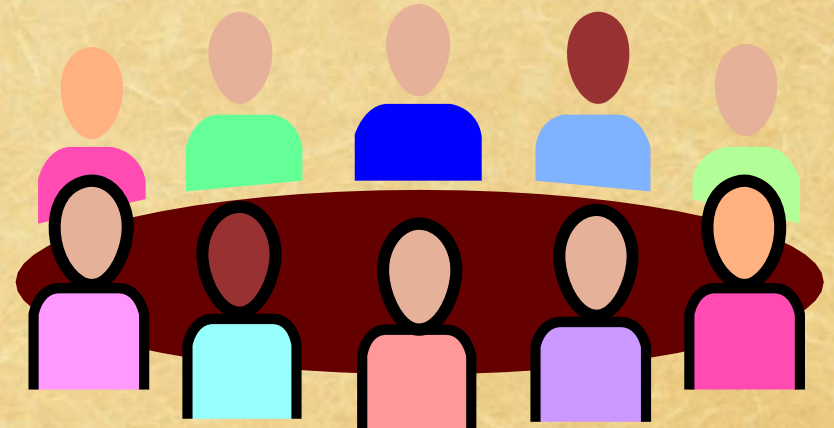
Grace Link for Children

- ◆ They began to pay much more attention to children. They introduced the Grace Link program and started training and coaching Sabbath School teachers.



Home Groups

- ◆ They felt that the growth and motivation would continue, so they initiated 8 home groups. Right now, besides the many visitors, the home groups are praying for 856 people.



Results

- ◆ In 2007

26 baptisms

+120 attending church

- ◆ In 2008

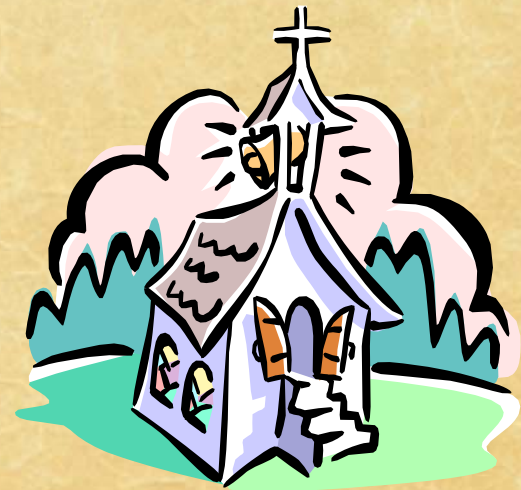
26 baptisms

+160 attending church

- ◆ In 2009

19 baptisms

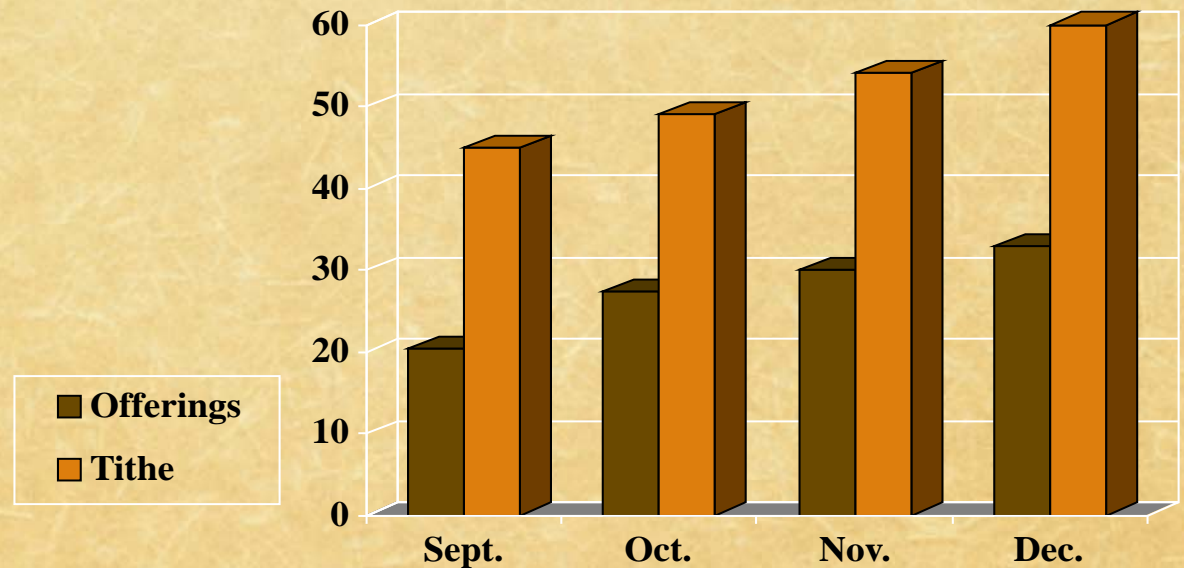
200 attending church





Results

- ◆ From September to December 2007, 30 new individuals started paying their tithe



Results

- ◆ The Pathfinder Club attendance increased from 8 to 40
- ◆ Children's Sabbath School attendance increased from 10 to 24









The Follow-up

- ◆ At present Bergamo is in the process of organizing three of its groups as new churches: Boario, Treviglio and Lecco

18 Teams Share Their Experience

- ◆ 18 teams of 3 to 4 members from the churches where the program is already running are visiting the churches willing to implement it.

Growth in the Italian Northern Field

- ♦ On account of this program the Italian Northern Field is growing quicker than the rest of the Italian Fields. In the next slide is a table comparing the statistical data of the 4 Italian Fields.

Italian Union – Total - (from Jan. 2007 thru Sept. 2008)

Activity	Sicilian Field	Southern Field	Central Field	Northern Field
Number of Members (as of December 2007)	1471	846	2903	2769
Churches	20	15	34	42
Organized Groups	5	5		5
Baptisms / Accepted by vote and Confession of Faith	32	46	129	257
Members who give Bible Studies	143	60	102	186
Organized Sabbath School Action Units	79	40	202	227
Small Family Group	68	35	89	164
People Interested	224	120	320	616

Italian Union Statistics

Yearly Baptisms 1984-2013

STATISTICHE MEMBRI UICCA 1984-2013

Battesimi Annui

Anno	membri inizio anno	battesimi	% battesimi su membri di chiesa	N Chiese	Battesimi per chiesa
1984	4.859	188	3,9%	84	2,2
1985	4.858	180	3,7%	87	2,1
1986	4.915	141	2,9%	87	1,6
1987	4.923	173	3,5%	88	2,0
1988	4.949	184	3,7%	88	2,1
1989	5.025	155	3,1%	88	1,8
1990	5.042	137	2,7%	89	1,5
1991	5.095	159	3,1%	89	1,8
1992	5.223	125	2,4%	88	1,4
1993	5.210	146	2,8%	88	1,7
1994	5.243	141	2,7%	88	1,6
1995	5.327	160	3,0%	88	1,8
1996	5.250	119	2,3%	90	1,3
1997	5.274	120	2,3%	92	1,3
1998	5.445	158	2,9%	92	1,7

Anno	membri inizio anno	battesimi	% battesimi su membri di chiesa	N Chiese	Battesimi per chiesa
1999	5.593	163	2,9%	92	1,8
2000	5.934	151	2,5%	92	1,6
2001	5.895	222	3,8%	92	2,4
2002	6.229	161	2,6%	92	1,8
2003	6.460	138	2,1%	95	1,5
2004	6.680	181	2,7%	100	1,8
2005	7.109	231	3,2%	105	2,2
2006	7.804	262	3,4%	105	2,5
2007	7.921	281	3,5%	105	2,7
2008	8.305	282	3,4%	107	2,6
2009	8.619	355	4,1%	107	3,3
2010	9.070	235	2,6%	109	2,2
2011	9.145	289	3,2%	109	2,7
2012	9.426	207	2,2%	109	1,9
2013	9.548	199	2,1%	110	1,8
<i>valori medi</i>		186	3,0%		1,95

Church Members

Statistical Data (2008-2013)

Presentiamo di seguito un aggiornamento alle tabelle già inserite nel rapporto della Segreteria. I dati sono stati aggiornati al 31 dicembre del 2013, inoltre sono state riviste alcune variazioni che differiscono leggermente rispetto alla versione del rapporto.

MEMBRI DI CHIESA ANNI 2008 - 2013 E VARIAZIONI ANNUALI

ANNI	2008		2009		2010		2011		2012		2013	
Totale membri	8.619		9.070		9.145		9.426		9.548		9.571	
Membrî per Campo	membri	crescita	membri	crescita	membri	crescita	membri	crescita	membri	crescita	membri	crescita
Campo Nord	3.012	8,1%	3.352	11,3%	3.386	1,0%	3.284	-3,0%	3.419	4,1%	3.601	5,3%
Campo Centro	2.990	2,9%	3.085	3,2%	3.109	0,8%	3.205	3,1%	3.199	-0,2%	3.202	0,1%
Campo Sud	852	0,7%	808	-5,2%	808	0,0%	1.031	27,6%	1.038	0,7%	987	-4,9%
Campo Siciliano	1.471	0,0%	1.489	1,2%	1.481	-0,5%	1.499	1,2%	1.500	0,1%	1.454	-3,1%
Ch. del Campo	294	-7,5%	336	14,3%	361	7,4%	407	12,7%	392	-3,7%	327	-16,6%
Crescita annuale	3,80%		4,97%		0,82%		2,98%		1,28%		0,24%	

BATTESIMI ANNI 2008 - 2013 E VARIAZIONI ANNUALI

ANNI	2008		2009		2010		2011		2012		2013	
Totale battesimi	282		355		235		289		207		199	
Suddivisione per Campi del numero dei battesimi e relativa crescita annuale												
Campo Nord	141	19,5%	177	25,5%	97	-45,2%	108	11,3%	97	-10,2%	102	5,2%
Campo Centro	90	76,3%	95	5,6%	102	7,4%	87	-14,7%	52	-40,2%	61	17,3%
Campo Sud	18	-21,7%	22	22,2%	13	-40,9%	59	353,8%	28	-52,5%	12	-57,1%
Campo Siciliano	26	65,0%	53	103,8%	17	-67,9%	29	70,6%	22	-24,1%	21	-4,5%
Ch. del Campo	5	-51,2%	8	60,0%	6	-25,0%	6	0,0%	8	33,3%	3	-62,5%
Variazioni annue	-17,9%		25,9%		-33,8%		23,0%		-28,4%		-3,9%	

PERDITE MEMBRI ANNI 2008 - 2013

ANNI	2008		2009		2010		2011		2012		2013	
Uscite	morti	apostasie	morti	apostasie	morti	apostasie	morti	apostasie	morti	apostasie	morti	apostasie
Totali	51	50	57	82	43	81	54	65	49	43	58	92
	101		139		124		119		92		150	

If you Don't Try it Won't Fly

Have you already
consider that a similar
experience may also
happen in your field?

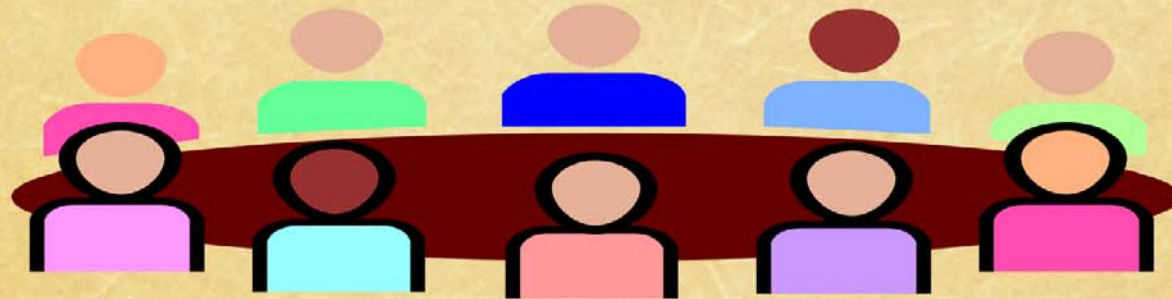




**Sabbath School
Action Units in
other EUD territories**

19 Churches in 7 countries

Inter European Division



**Sabbath School Action Unit -
a supporting structure for DISCIPLES**



Health
EXPO

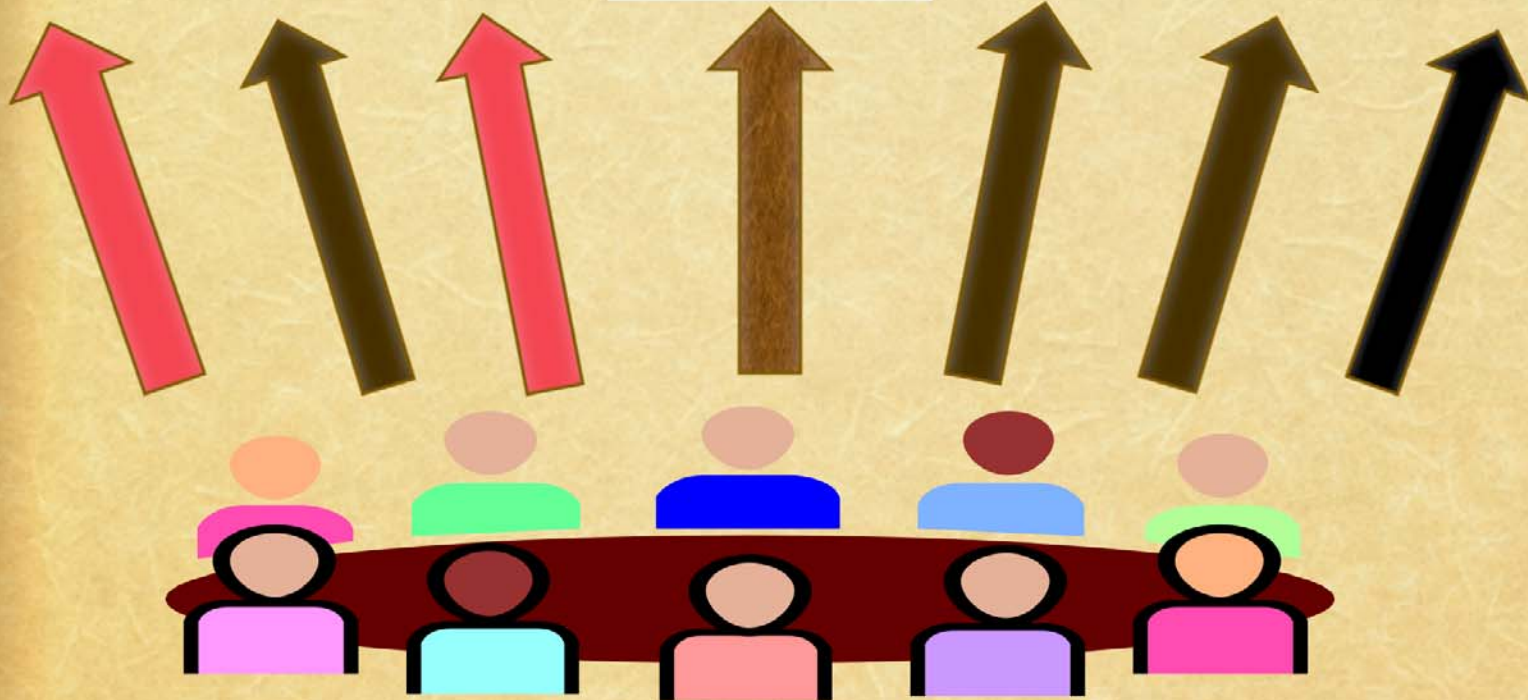


Media



Family &
KID

Etc.



Sabbath School Action Unit
A united working group,
a supporting structure for
Service and Mission



church	Attendance	Service IN	Service OUT	In SM GR
		00000000	00000000	00000000
Portugal P		00000000	00000000	00000000
Lijria Sp				
Damaris F				
Alessandria I				
Torino I				
Cremona I				
Massa I				
Brescia I				
Bazau RO				
DiscalestiRO				
Sarat RO				
Cluj RO				
Filadelfia RO				
Movila RO				
Nicolesti RO		00000000	00000000	00000000
Parisoru RO		Data provided by union, conference and church leaders		
Resita RO		00000000	00000000	00000000
Trianva BG		00000000	00000000	00000000
Arauc CH		00000000	00000000	00000000

19 churches

4 Questions Related to Church Growth

- Attendance
- Service IN, the church
- Service OUT, for people outside the Church
- People engaged In Small Groups

Numerical data from the four-question survey made in 19 European churches

Inter European Division

Grow Average SSAU in 19 Churches

Churches/Nations	Percentage grow registered from the beginning of the Sabbath School Action Unit			
	Church attendance grow %	Church members involved IN %	Church members involved OUT %	Members involved in small group %
Portugal (P)	10	6	8	4
Lirya (Sp)	50	30	20	10
Damary-Le-Lys (F)	50	8	0	0
Alessandria (I)	20	20	15	20
Torino Romena (I)	15	10	12	12
Cremona (I)	70	40	50	30
Massa (I)	75	65	50	65
Brescia Ganese (I)	55	30	10	7
Bethel-Buzau (RO)	10	20	10	3
Descalesti (RO)	60	50	30	0
Sarat (RO)	60	40	20	10
Ciuj (RO)	60	30	30	20
Filadelfia (RO)	0	10	10	0
Movila (RO)	0	15	10	10
Nicolesti (RO)	60	40	40	50
Perisoru (RO)	0	25	15	10
Resita (RO)	10	10	5	10
Trianva (BG)	30	20	20	0
Aarau (CH)	10	5	2	0



Number four:
Church attendance

**Almost all churches have experienced
growth in attendance**

Number two:

Members who have
decided to engage themselves in the
service for the church

All churches have experienced growth

Number three:

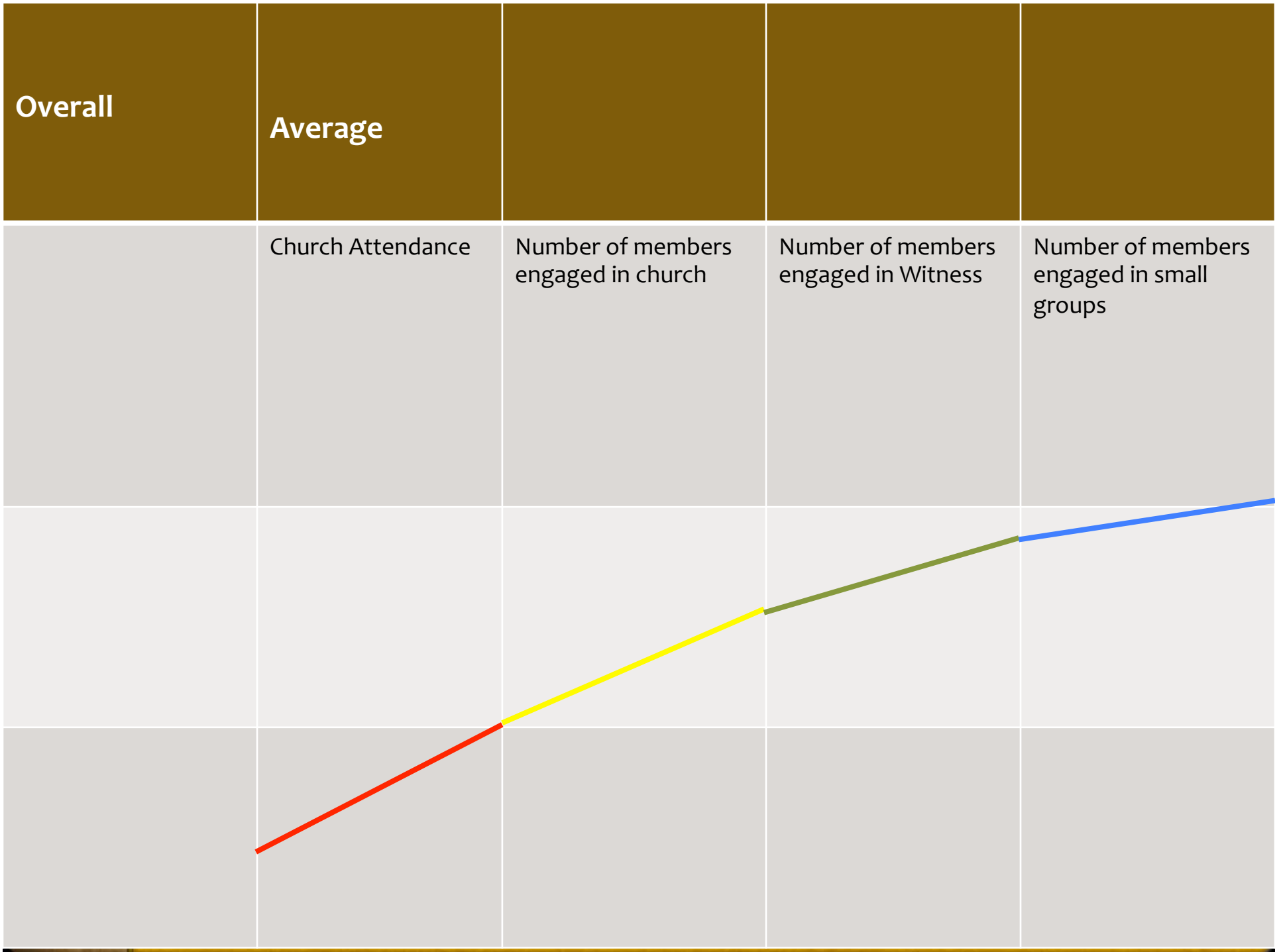
Members who have
decided to engage themselves
in outreach

Many churches have experienced growth

Number four:

Members who have
decided to participate
in Smalls Groups

Several churches have experienced growth



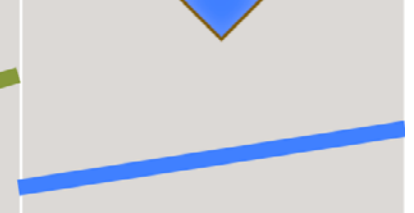
General Average

Church Attendance

Number of members engaged in church

Number of members engaged in outreach

Number of members engaged in small groups



Churches that applied the principles of the SSAU grew in several areas





Sabbath School Action Unit

A supporting structure to put into practice
the Mission of the Church in making
disciples for Jesus



Importance of Dedicated Leaders

- ◆ We need to:
 - ◆ Find them
 - ◆ Train them
 - ◆ Coach them

Without dedicated leaders, NOTHING WILL HAPPEN !

Importance of Leadership

- ◆ We need to:
 - ◆ Find them
 - ◆ Train them
 - ◆ Coach them

Leader (Father) Wanted

Every Project Must Have a Leader (Father)

- ◆ Willing to assume challenges and hardships
- ◆ With a deep passion for Christ and the people
- ◆ Convinced that he cannot do it alone – without God and other men:
- ◆ Must be a man or woman of prayer,
- ◆ Must be engaged in finding the right partners, training and motivating them
- ◆ Starting small, simple and soon...

Team (Family) Wanted

- ◆ The Need:
- ◆ People not willing to work in a team will soon or later fail
- ◆ We don't have all the skills
- ◆ We are social beings. Fellowship, training and encouragement
- ◆ As we help others we help ourselves
- ◆ If we don't have a family we need to look for one

Team (Family) Wanted

- ◆ Key elements for the success of the team and its ministry:
- ◆ Atmosphere of loving relationship and acceptance
- ◆ Regular fellowship and support beyond the meeting time
- ◆ Study of the word, worship (adoration) and prayer together
- ◆ Purpose well defined – clear and shared vision
- ◆ Purpose driven – outreach and mission involvement
- ◆ Ministries/tasks according to talents
- ◆ Ministries/activities aimed to the felt needs